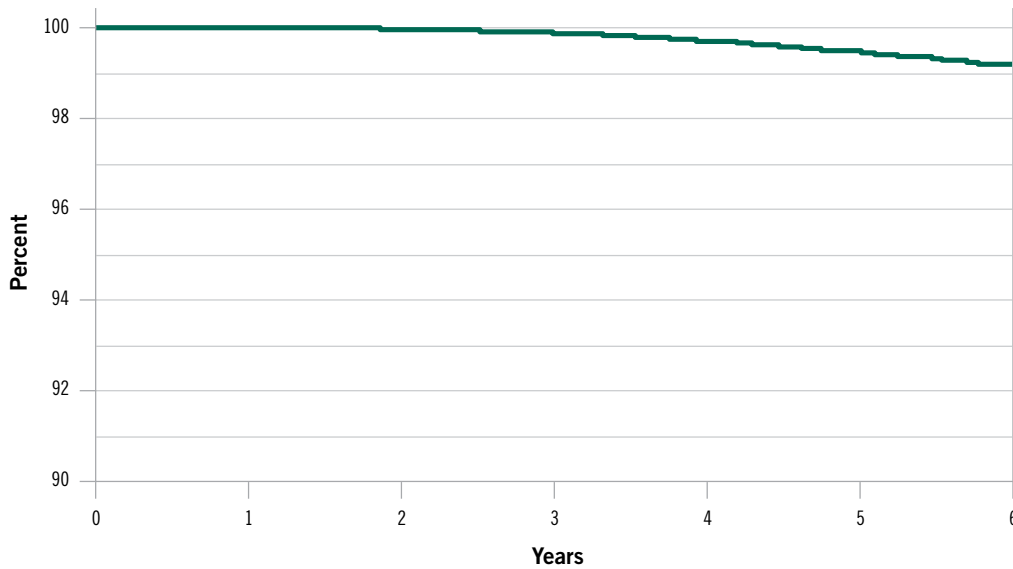


Estimated Performance of Affected Fortify™, Fortify Assura™, Quadra Assura™, Unify™, Unify Assura™ and Unify Quadra™ Devices

6-year combined Kaplan-Meier (KM) survival curve of freedom from premature battery depletion associated with Li Deposits in affected device population



Year	1 Year	2 Year	3 Year	4 Year	5 Year	6 Year
Survival Probability	99.999%	99.998%	99.900%	99.718%	99.478%	99.177%
Sample size	~230,000	~170,000	~121,000	~80,000	~41,000	~8,000

Survival Calculation General Methods

Internal modeling based on an analysis of field returns related to premature battery depletions associated with Lithium clusters. Reflects data through September 30th 2016.

sjm.com

St. Jude Medical Inc.
 Global Headquarters
 One St. Jude Medical Drive
 St. Paul, MN 55117
 USA
T +1 651 756 2000 | **F** +1 651 756 3301



Rx Only

Brief Summary: Prior to using these devices, please review the Instructions for Use for a complete listing of indications, contraindications, warnings, precautions, potential adverse events and directions for use.

Unless otherwise noted, ™ indicates that the name is a trademark of, or licensed to, St. Jude Medical or one of its subsidiaries. ST. JUDE MEDICAL and the nine-squares symbol are trademarks and service marks of St. Jude Medical, Inc. and its related companies. © 2016 St. Jude Medical, Inc. All Rights Reserved.