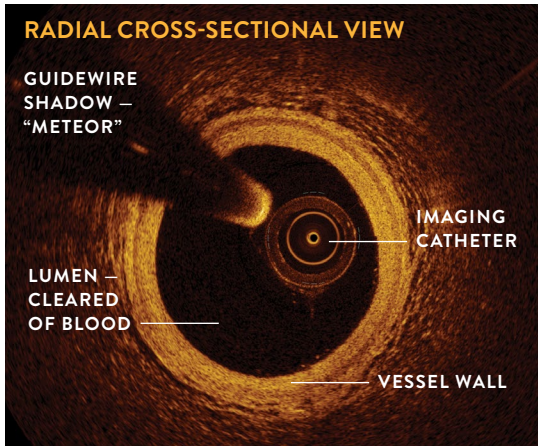


OPTICAL COHERENCE TOMOGRAPHY (OCT)

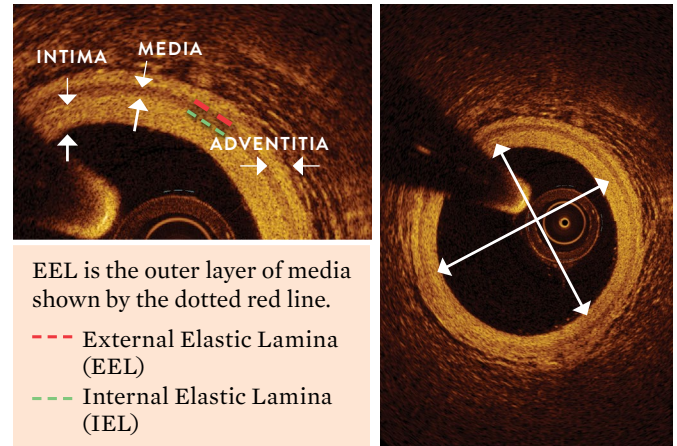
BASICS OF IMAGE INTERPRETATION

5 OCT FUNDAMENTALS¹

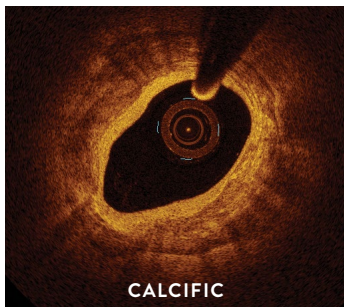
1. Elements of an OCT image view



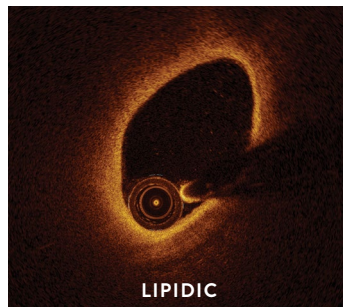
2. Normal vessel tissue view



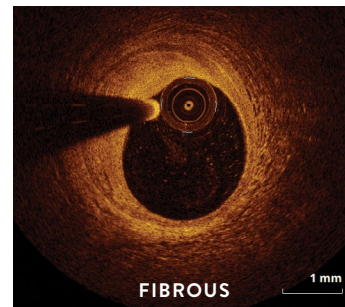
3. Most common type of plaque description: OCT helps to identify different plaque morphologies.



- Clear, Delineated Edges
- “Islands” or “Rocks”

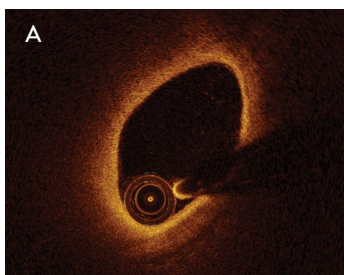


- Dark
- Homogeneous
- Diffuse, “Shadowy” Edges
- “Murky Water”

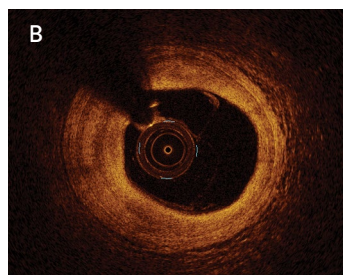


- Bright
- Homogeneous

4. Attenuation: To describe images, the term “attenuation” is used in regards to light penetration, or simply “loss of light.”



(A) **High attenuation** = high loss of light, dark image; can’t see deep tissue

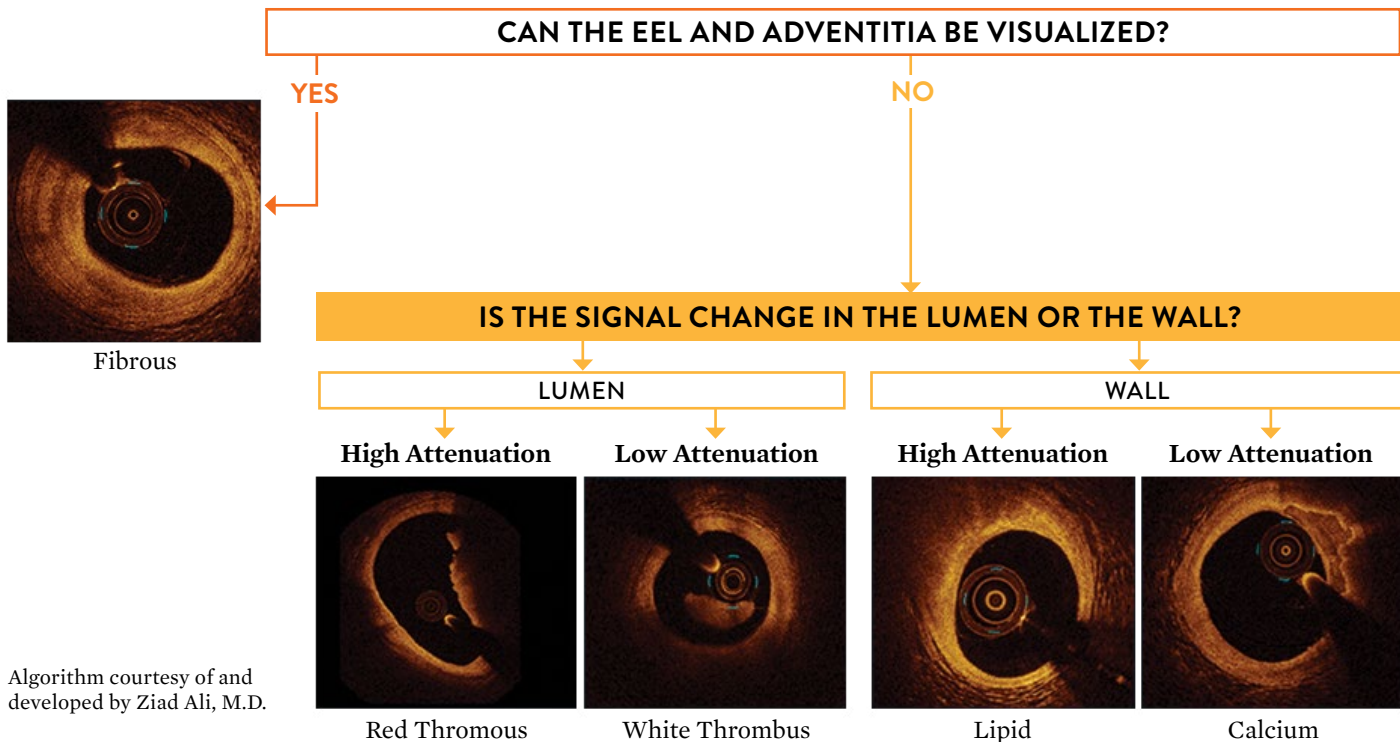


(B) **Low attenuation** = light penetrates deep; can see tissue

1. Tearney, G., et al., Consensus Standards for Acquisition, Measurement, and Reporting of Intravascular Optical Coherence Tomography Studies A Report From the International Working Group for Intravascular Optical Coherence Tomography Standardization and Validation. *JACC* Vol. 59, No. 12, 2012.

Information contained herein for DISTRIBUTION outside of the U.S. ONLY. Check the regulatory status of the device in areas where CE marking is not the regulation in force.

5. Algorithm for image interpretation: This quick guide can help to interpret OCT images.



CAUTION: This product is intended for use by or under the direction of a physician. Prior to use, reference the Instructions for Use, inside the product carton (when available) or at manuals.cifu.abbott for more detailed information on Indications, Contraindications, Warnings, Precautions and Adverse Events. This material is intended for use with healthcare professionals only.

Illustrations are artist's representations only and should not be considered as engineering drawings or photographs. Photos on file at Abbott.

Information contained herein for DISTRIBUTION outside of the U.S. ONLY. Check the regulatory status of the device in areas where CE marking is not the regulation in force.

Abbott International BV
 Park Lane, Culliganlaan 2B, 1831 Diegem, Belgium, Tel: 32.2.714.14.11
www.cardiovascular.abbott
 ©2025 Abbott. All rights reserved. MAT-2201086 v2.0

