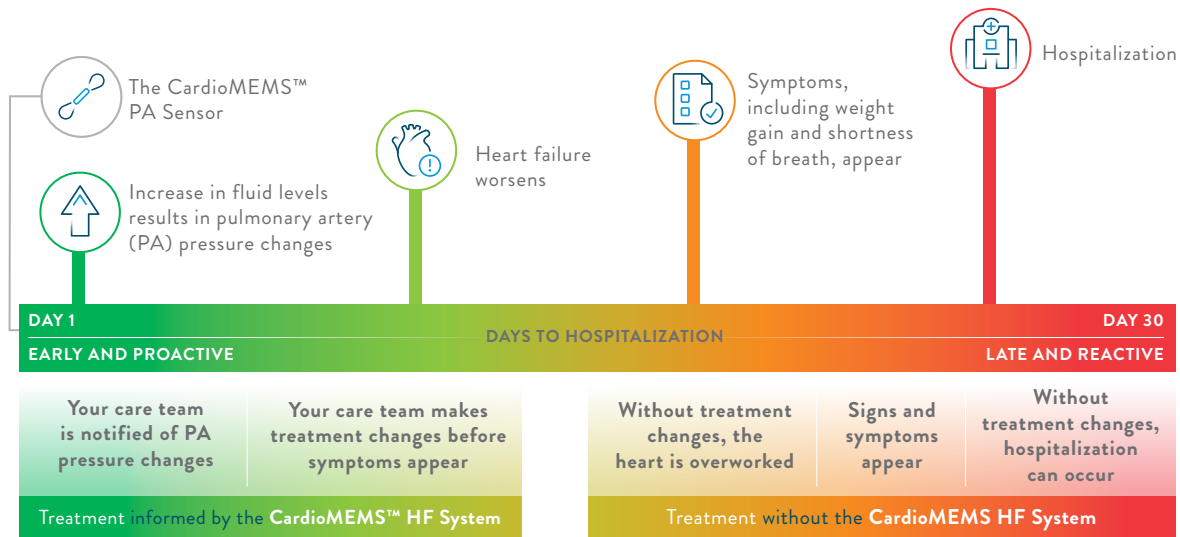
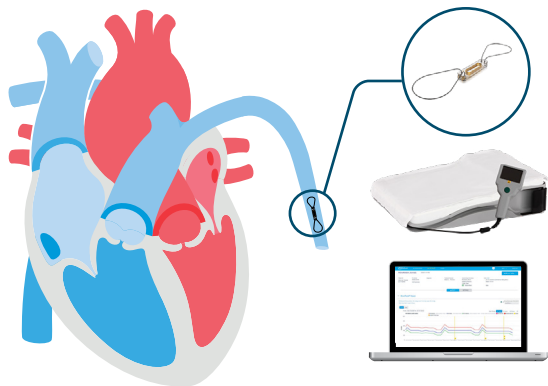


# EARLY TREATMENT IS IMPORTANT AND CAN HELP KEEP YOU OUT OF THE HOSPITAL

Each time someone is hospitalized for heart failure, their heart function decreases and their heart failure worsens dramatically.<sup>1</sup>





## How the CardioMEMS™ HF System works:

Sensor is inserted using a common procedure.



You take daily measurements in a few minutes.  
Use it at home, on vacation or wherever you are.



Your care team reviews your information and  
contacts you when necessary.

**FOR MORE INFORMATION, VISIT** [StayAheadofHF.com](http://StayAheadofHF.com)

1. Bui AL, Horwich TB, Fonarow GC. Epidemiology and risk profile of heart failure. *Nature Reviews Cardiology*. 2011;8(1):30-41.

### Abbott

6101 Stoneridge Dr., Pleasanton, CA 94588 USA, Tel: 1 925 847 8600  
Cardiovascular.Abbott/CardioMEMS

### Rx Only

**Brief Summary:** Prior to using these devices, please review the Instructions for Use for a complete listing of indications, contraindications, warnings, precautions, potential adverse events and directions for use.

**CardioMEMS™ HF System Indications and Usage:** The CardioMEMS™ HF System is indicated for wirelessly measuring and monitoring pulmonary artery pressure and heart rate in NYHA Class II or III heart failure patients who either have been hospitalized for heart failure in the previous year and/or have elevated natriuretic peptides. The hemodynamic data are used by physicians for heart failure management with the goal of

controlling pulmonary artery pressures and reducing heart failure hospitalizations.

**CardioMEMS™ HF System Contraindications:** The CardioMEMS HF System is contraindicated for patients with an inability to take dual antiplatelet or anticoagulants for one month post implant.

**CardioMEMS™ HF System Potential Adverse Events:** Potential adverse events associated with the implantation procedure include, but are not limited to, the following: air embolism, allergic reaction, infection, delayed wound healing, arrhythmias, bleeding, hemoptysis, hematoma, nausea, cerebrovascular accident, thrombus, cardiovascular injury, myocardial infarction, death, embolization, thermal burn, cardiac perforation, pneumothorax, thoracic duct injury and hemothorax.

™ Indicates a trademark of the Abbott group of companies.

+ Indicates a third party trademark, which is property of its respective owner.

© 2022 Abbott. All Rights Reserved.

MAT-2103291 v2.0 | Item approved for U.S. use only.

