

TAKE CHARGE OF YOUR HEART FAILURE

Heart failure, sometimes called a weak heart, is a serious and progressive condition in which the heart muscle can't pump enough oxygen-rich blood to meet the body's needs.

IS HEART FAILURE IMPACTING YOUR LIFE?

- ✓ Are you short of breath during normal daily activity?
- ✓ Have you been hospitalized for heart failure in the last 12 months?
- ✓ Do you have swelling of the abdomen/belly, feet, ankles and/or legs?
- ✓ Do you feel overly tired compared to a typical day for you?
- ✓ Are you comfortable **only** when you are at rest?

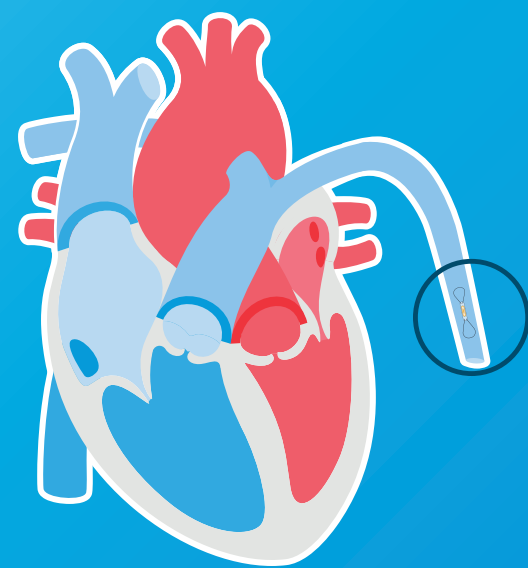
IF YOU ANSWERED “YES” TO ONE OR MORE OF THESE QUESTIONS,

take one of the attached cards and talk to your doctor about the CardioMEMS™ HF System.

LEARN MORE ABOUT

how the CardioMEMS HF System can improve your quality of life¹ at **StayAheadofHF.com**

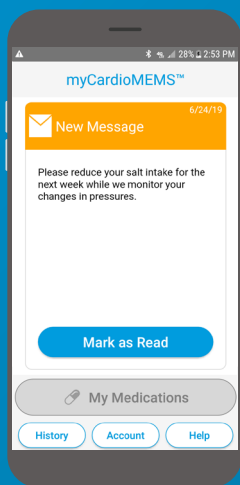
HOW DOES THE CARDIOMEMS HF SYSTEM WORK?



Sensor is inserted using a common procedure.



You take daily readings of the sensor from the comfort of your home.



Your doctor reviews the data and contacts you as necessary.

TAKE CHARGE STAY AHEAD OF HEART FAILURE WITH THE CARDIOMEMS™ HF SYSTEM

The CardioMEMS™ HF System helps your healthcare provider understand when your heart failure is getting worse, often before you notice symptoms. The device measures pressures in your lungs that rise when fluid increases because the heart is too weak or stiff to pump effectively. With these pressure readings, your healthcare provider can then take steps to manage your heart failure before it has serious effects on your quality of life or puts you back in the hospital.

LEARN MORE
about heart failure and watch videos of CardioMEMS HF System patients discussing how it has transformed their lives:
StayAheadofHF.com

1. Abraham WT, Adamson PB, Bourge RC, Aaron MF, Costanzo MR, Stevenson LW, et al. Wireless pulmonary artery haemodynamic monitoring in chronic heart failure: a randomized controlled trial. *The Lancet*. 2011;377(9766):658-666.

Abbott
One St. Jude Medical Dr., St. Paul, MN 55117 USA, Tel: 1 651 756 2000
Abbott.com

Rx Only
Brief Summary: Prior to using these devices, please review the Instructions for Use for a complete listing of indications, contraindications, warnings, precautions, potential adverse events and directions for use.

Indications and Usage: The CardioMEMS™ HF System is indicated for wirelessly measuring and monitoring pulmonary artery (PA) pressure and heart rate in New York Heart Association (NYHA) Class III heart failure patients who have been hospitalized for heart failure in the previous year. The hemodynamic data are used by physicians for heart failure management and with the goal of reducing heart failure hospitalizations.

Contraindications: The CardioMEMS HF System is contraindicated for patients with an inability to take dual antiplatelet or anticoagulants for one month post implant.

Potential Adverse Events: Potential adverse events associated with the implantation procedure include, but are not limited to, the following: infection, arrhythmias, bleeding, hematoma, thrombus, myocardial infarction, transient ischemic attack, stroke, death and device embolization.

™ Indicates a trademark of the Abbott group of companies.
Bluetooth and Bluetooth logo are registered trademarks of Bluetooth SIG, Inc.
© 2019 Abbott. All Rights Reserved.
33106-SJM-MEM-0619-0533 | Item approved for U.S. use only.