



CardioMEMS™ HF System

LIVE MORE WORRY LESS

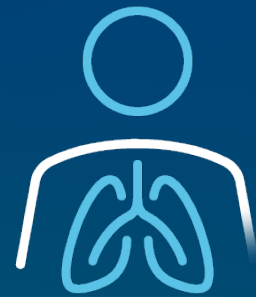
Take an active role in your
heart failure care with the
CardioMEMS™ HF System.



LIVE YOUR **BEST LIFE**

Heart failure (HF) is a condition where the heart gets weaker over time.

SIGNS AND SYMPTOMS CAN INCLUDE:



SHORTNESS
OF BREATH



FEELING TIRED



SWELLING OF FEET,
ANKLES, AND LEGS



WEIGHT GAIN

You usually don't know your heart failure is getting worse until symptoms start.

Now there is a way for your care team to identify when your heart failure is getting worse – even before you start feeling sick.

The **CardioMEMS™ HF System** is a proven technology that's helping your care teams improve the lives of patients with early treatment.

Through remote monitoring, the **CardioMEMS HF System** can help you live your best life by:

- Allowing you to do your day-to-day activities with confidence knowing your care team is monitoring your heart failure
- Reducing your chances of a heart failure hospitalization¹
- Partnering you with your care team to change treatment before any symptoms might appear

25,000+ PATIENTS IMPLANTED²

The CardioMEMS HF System is the leading remote monitoring system for heart failure.



LIFE WITH HEART FAILURE

Currently **6.2 million people** have heart failure,³ and it contributes to **1 in 9 deaths each year.**⁴ This sounds alarming, but with the CardioMEMS™ HF System, you can partner with your care team to create a treatment plan customized to keep you healthy.

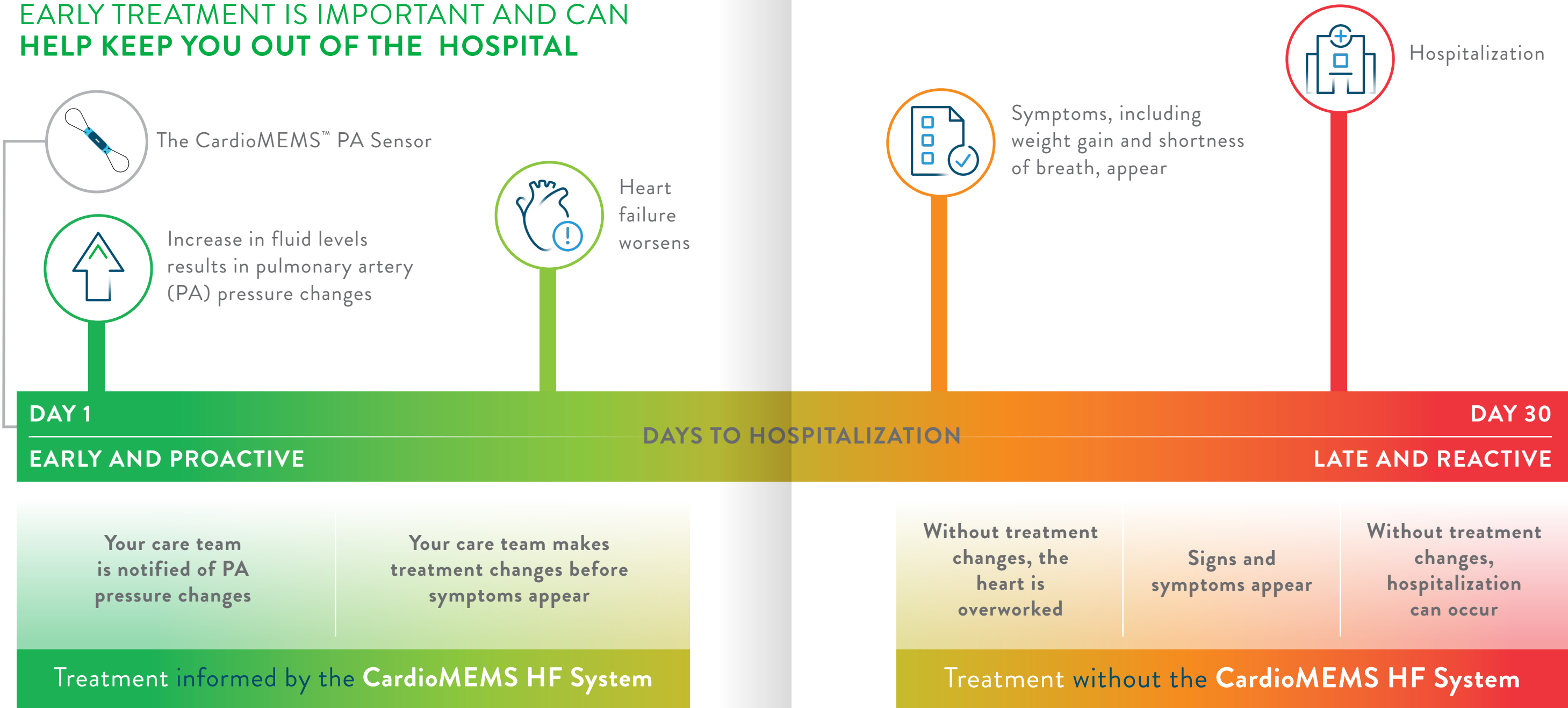


Increased pressure in the blood vessels in the lungs can be measured and treated. This is called pulmonary artery (PA) pressure.



The CardioMEMS™ PA Sensor detects these changes to identify silent symptoms earlier so your care team can identify early treatments.

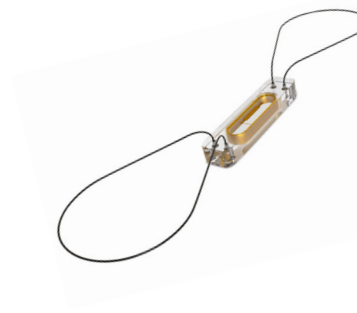
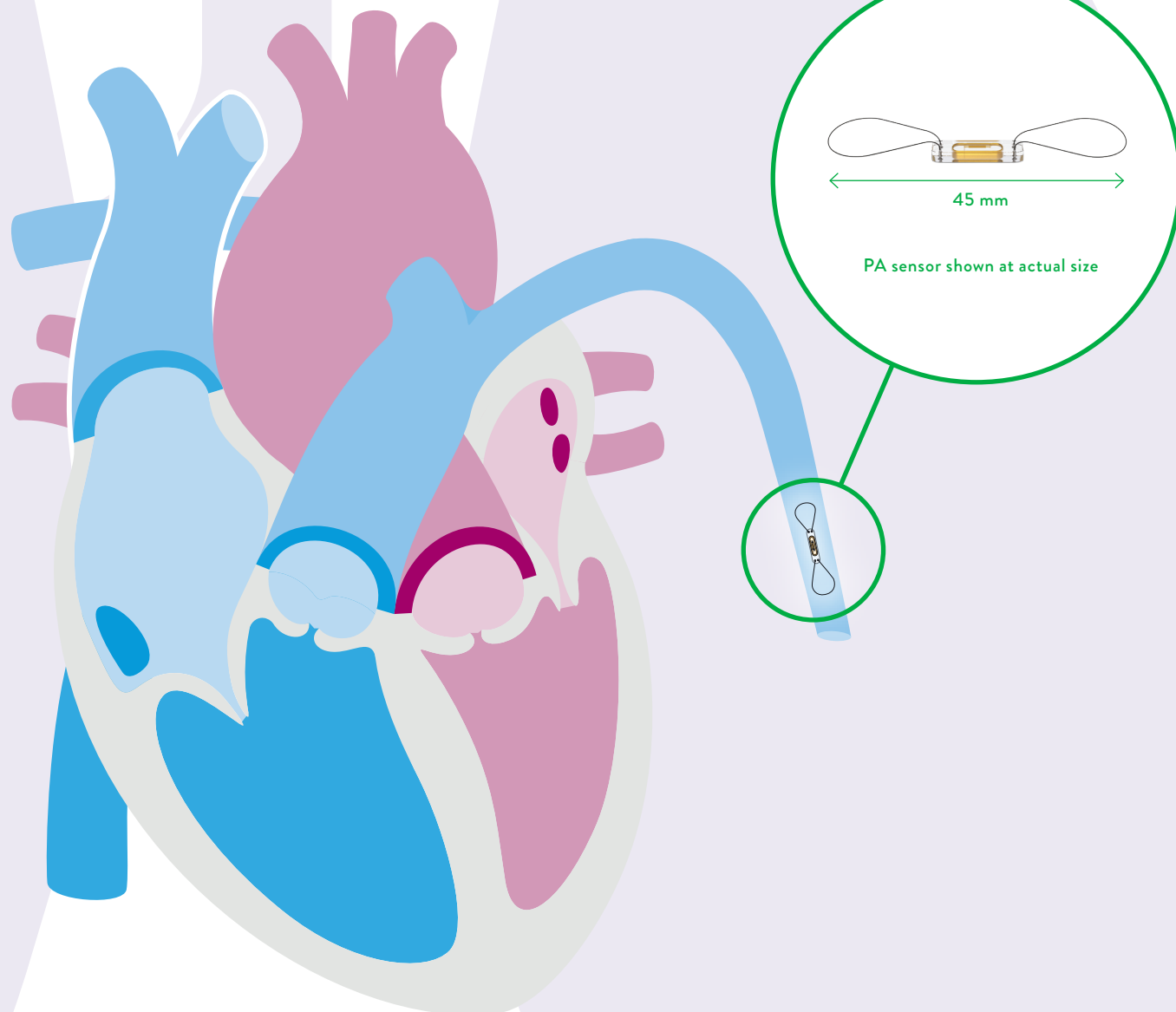
EARLY TREATMENT IS IMPORTANT AND CAN HELP KEEP YOU OUT OF THE HOSPITAL



HOW THE **CARDIOMEMS™ HF SYSTEM** WORKS

When your heart is too weak to pump effectively, fluid builds up and this causes PA pressure to increase, which is an early sign that your heart failure is getting worse.

The **CardioMEMS HF System** includes a tiny pressure-sensing device that measures pressure changes and sends the data to your care team.



ONE PROCEDURE. ONE SMALL DEVICE.

An appointment is scheduled to insert the CardioMEMS™ PA Sensor. It's the size of a paper clip and is put in your pulmonary artery.

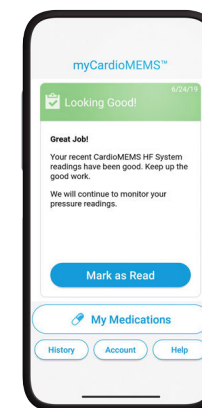
You will not feel the sensor; it has no batteries or wires and will not interfere with other devices. Often, patients go home the same day it's inserted.



REMOTE DAILY READINGS

You take daily measurements in a few short minutes. Use it at home, on vacation or wherever you're at.

It's a simple process and information is sent to a secure website that your care team can access.



TREATMENT CHANGES

Your care team regularly reviews the information and contacts you if changes to your medications or treatment plan are necessary through the myCardioMEMS™ mobile app or by phone call.

MORE **CONFIDENCE**

The **CardioMEMS™ HF System** gives your care team the ability to change your treatment before your heart failure gets worse.⁵ You have the power to partner with your care team to slow your heart failure and feel re-energized to live your life with more confidence.

Using PA pressure data, your care team can recommend treatment changes

WEEKS EARLIER

before other symptoms appear.⁵

78%

REDUCED HOSPITAL READMISSIONS

After a heart failure hospitalization, nearly 1 in 4 patients are back in the hospital within 30 days.⁶

The CardioMEMS HF System is proven to help reduce 30-day heart failure hospital readmissions by 78%.⁷

MEET PATIENTS LIVING THEIR **BEST LIFE**

Meet
IRIS

“

Being able to know that someone is watching and helping me to maintain my levels to keep the pressures off of my heart is what makes the biggest difference.”

– Iris, a CardioMEMS™
HF System patient



Meet **BOB**

“

Every morning I do my reading. The entire process of setting up, laying on it, and putting it back takes maybe five minutes at most. Then it's on with my day. Such a simple thing that can bring me peace of mind and assurance is pretty incredible. ”

– Bob, a CardioMEMS™ HF System patient

ENJOY LIFE

Abbott is committed to bringing life-changing medical device technologies to the people who need them. The **CardioMEMS™ HF System** is just one of the ways we're changing the lives of heart failure patients.

Take an active role in improving the quality of your life by talking to your healthcare provider about the CardioMEMS HF System and whether it's right for you.

For more information, visit stayaheadofhf.com and meet other patients like you who are looking to live more and worry less.



Watch educational videos at
abbott.com/aboutcardiomems

References

1. Lindenfeld J, Zile MR, Desai AS, et al. Hemodynamic-guided management of heart failure (GUIDE-HF): a randomized controlled trial. *The Lancet*. 2021;398:991-1001.
2. Abbott data on file.
3. Virani SS, Alonso A, Benjamin EJ, et al. Heart disease and stroke statistics—2020 update: a report from the American Heart Association. *Circulation*. 2020;141:e139-e596.
4. Mozzafarian paper: Mozzafarian D, Benjamin EJ, Go AS, et al. on behalf of the American Heart Association Statistics Committee and Stroke Statistics Subcommittee. Heart disease and stroke statistics—2016 update: a report from the American Heart Association. *Circulation*. 2016;133:e38-e360.
5. Adamson PB. Pathophysiology of the transition from chronic compensated and acute decompensated heart failure: new insights from continuous monitoring devices. *Current Heart Failure Reports*. 2009;6:287-292.
6. Muhammad Shahzeb Khan, Jayakumar Sreenivasan, Norman Lateef, Marwan S. Abougergi, Stephen J. Greene, Tariq Ahmad, Stefan D. Anker, Gregg C. Fonarow, Javed Butler. Trends in 30- and 90-Day Readmission Rates for Heart Failure. *AHA Journals*. 2021; <https://doi.org/10.1161/CIRCHEARTFAILURE.121.008335>
7. Adamson, et al. Pulmonary artery pressure-guided heart failure management reduces 30-day readmissions. *Circulation: Heart Failure*. 2016;115.002600.

Abbott

One St. Jude Medical Dr., St. Paul, MN 55117 USA, Tel: 1 651 756 2000
Cardiovascular.Abbott/CardioMEMS

Rx Only

Brief Summary: Prior to using these devices, please review the Instructions for Use for a complete listing of indications, contraindications, warnings, precautions, potential adverse events and directions for use.

CardioMEMS™ HF System Indications and Usage: The CardioMEMS™ HF System is indicated for wirelessly measuring and monitoring pulmonary artery pressure and heart rate in NYHA Class II or III heart failure patients who either have been hospitalized for heart failure in the previous year and/or have elevated natriuretic peptides. The hemodynamic data are used by physicians for heart failure management with the goal of controlling pulmonary artery pressures and reducing heart failure hospitalizations.

CardioMEMS™ HF System Contraindications: The CardioMEMS™ HF System is contraindicated for patients with an inability to take dual antiplatelet or anticoagulants for one month post implant.

CardioMEMS™ HF System Potential Adverse Events: Potential adverse events associated with the implantation procedure include, but are not limited to, the following: air embolism, allergic reaction, infection, delayed wound healing, arrhythmias, bleeding, hemoptysis, hematoma, nausea, cerebrovascular accident, thrombus, cardiovascular injury, myocardial infarction, death, embolization, thermal burn, cardiac perforation, pneumothorax, thoracic duct injury and hemothorax.

myCardioMEMS™ Mobile App Limitations: Patients must use their own Apple[‡] or Android[‡] mobile device to receive and transmit information to the myCardioMEMS™ Mobile App. To do so the device must be powered on, app must be installed and data coverage (cellular or Wi-Fi[‡]) available. The myCardioMEMS™ Mobile App can provide notification of medication adjustments and reminders, requests for lab work and acknowledgement that the PA pressure readings have been received. However, there are many internal and external factors that can hinder, delay, or prevent acquisition and delivery of the notifications and patient information as intended by the clinician. These factors include: patient environment, data services, mobile device operating system and settings, clinic environment, schedule/configuration changes, or data processing.

™ Indicates a trademark of the Abbott group of companies.

‡ Indicates a third-party trademark, which is property of its respective owner.

© 2022 Abbott. All Rights Reserved.

MAT-2200151 v1.0 | Item approved for U.S. use only.

