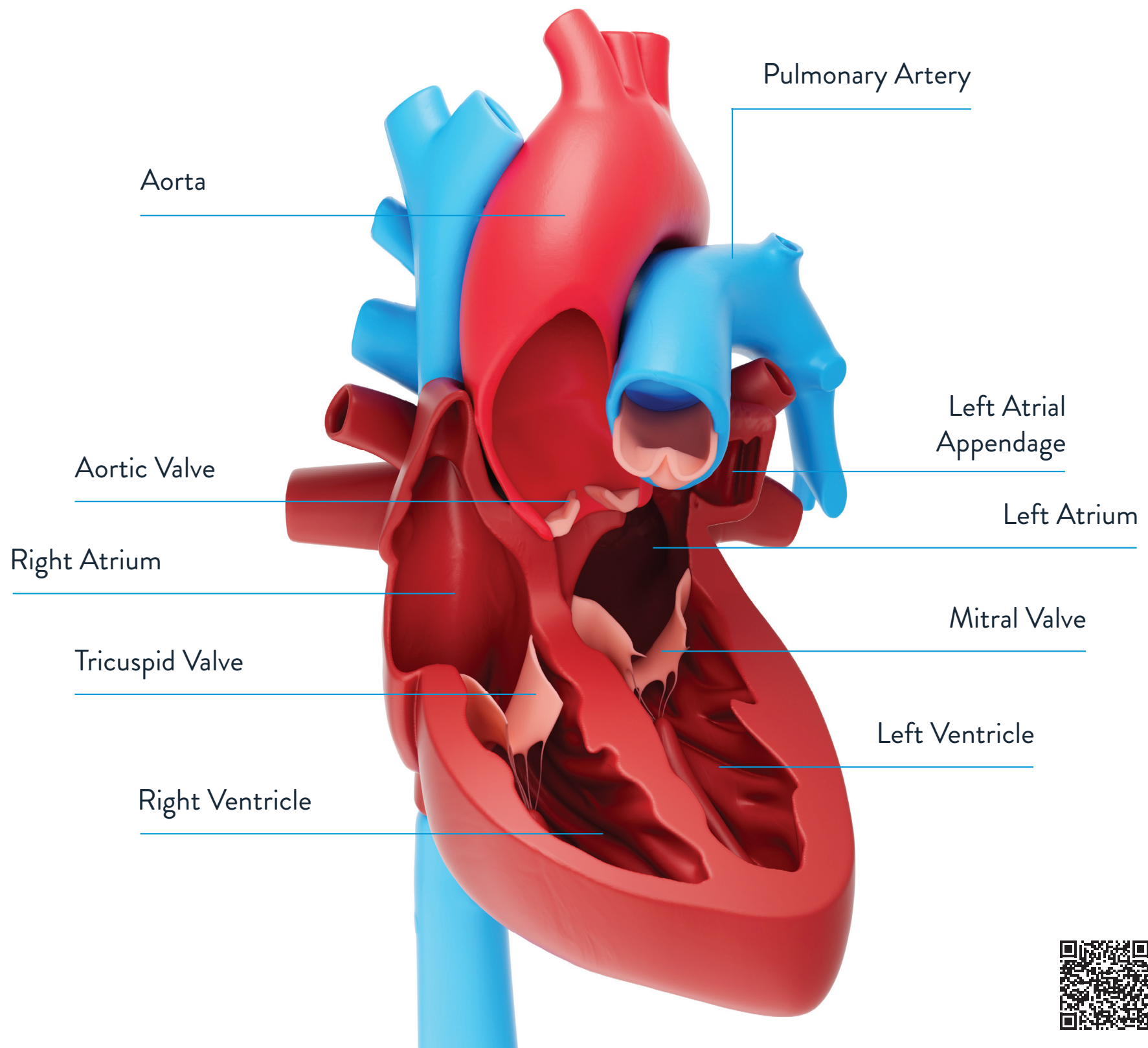


What Is Heart Failure?

When your heart is unable to pump enough blood for your body, you have a condition called heart failure.



Heart for illustration purposes only.
Not drawn to scale.



[Learn More](#)

Common Symptoms of Heart Failure

If you are experiencing any of these symptoms, talk to your doctor today.

- Shortness of Breath
- Decreased Energy
- Lightheadedness
- Nausea
- Swelling of Feet / Ankles / Legs
- Weight Gain
- Faster Heart Rate
- Frequent Coughing

Abbott
The Corporate Village, Da Vincilaan 11 Box F1, 1935
Zaventem, Belgium, +32 2 774 68 11
cardiovascular.abbott
©2024 Abbott. All Rights Reserved.
MAT-2404408 v1.0 | Item approved for EMEA use only.

