



# ATRIAL FIBRILLATION AND ABLATION PATIENT EDUCATION KIT

# USING THIS KIT

This educational content is available to use on your website, social media, and emails to patients. Mix and match as you see fit. The award-winning animations have been especially well-received! All content is provided to assist with patient education related to AFib and ablation. It may also be found on [AFAnswers.com](https://www.AFAnswers.com)

---



# KNOWLEDGE IS POWER

The Atrial Fibrillation information you need to help live the life you want.

---

1

I think my heartbeat might be irregular. How do I know if it is AFib?

[Learn More >](https://bit.ly/3oCONgj)

<https://bit.ly/3oCONgj>

2

I've been diagnosed with AFib. Now what?

[Learn More >](https://bit.ly/3Co23E4)

<https://bit.ly/3Co23E4>

3

I want to get off medication. Is that possible?

[Learn More >](https://bit.ly/3kJkwoS)

<https://bit.ly/3kJkwoS>

4

I have an appointment with my doctor. What should I bring?

[Learn More >](https://bit.ly/3kDJlCD)

<https://bit.ly/3kDJlCD>

The information provided is not intended for medical diagnosis or treatment or as a substitute for professional medical advice. Consult with a physician or qualified healthcare provider for appropriate medical advice.

## ABOUT THE LINKS

Text links go to AFAnswers.com and show the answers to the questions above. (Bit.ly links are provided underneath in case you need them. Bit.ly was used to shorten long URLs.)



# YOU'RE NOT ALONE

AFib is the most common type of heart arrhythmia<sup>1</sup>.

**33 MILLION<sup>2</sup>**

The number of people worldwide that have AFib

**2X<sup>3</sup>**

AFib numbers are predicted to more than double by 2050

**+5 MILLION<sup>4</sup>**

Every year 5 million new cases will be diagnosed

## REFERENCES

1. CDC. Atrial Fibrillation Fact Sheet. [https://www.cdc.gov/heartdisease/atrial\\_fibrillation.htm?CDC\\_AA\\_refVal=https%3A%2F%2Fwww.cdc.gov%2Fdhdsp%2Fdata\\_statistics%2Ffact\\_sheets%2Ffs\\_atrial\\_fibrillation.htm](https://www.cdc.gov/heartdisease/atrial_fibrillation.htm?CDC_AA_refVal=https%3A%2F%2Fwww.cdc.gov%2Fdhdsp%2Fdata_statistics%2Ffact_sheets%2Ffs_atrial_fibrillation.htm), 8 Sept. 2020. Accessed 19 Sept. 2020.

2. Morillo, C. A., Banerjee, A., Perel, P., Wood, D., & Jouven, X. (2017). Atrial fibrillation: the current epidemic. *Journal of geriatric cardiology: JGC*, 14(3), 195–203. <https://doi.org/10.11909/j.issn.1671-5411.2017.03.011>

3. Go A, Hylek E, Phillips K, Chang Y, et al. Prevalence of Diagnosed Atrial Fibrillation in Adults: National implications for rhythm management and stroke prevention: the AnTicoagulation and Risk Factors In Atrial Fibrillation (ATRIA) Study. *JAMA*. 2001; 285(18): 2370-5. <http://jama.ama-assn.org/content/285/18/2370.abstract>

4. Chugh SS, Haymoeller R, NarayananK et al. Worldwide epidemiology of atrial fibrillation: a Global Burden of Disease 2010 study. *Circ*. 2014; 129:837-847.

The information provided is not intended for medical diagnosis or treatment or as a substitute for professional medical advice. Consult with a physician or qualified healthcare provider for appropriate medical advice.

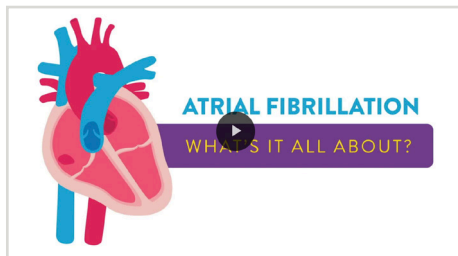


# AFIB RESOURCES

Feel confident you have all the right information you need to make healthy choices for yourself or a loved one.

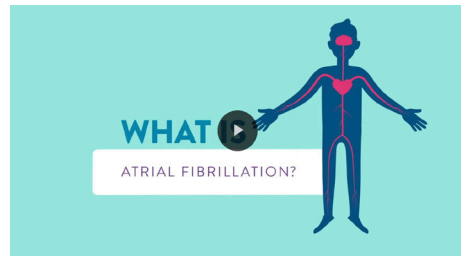
---

Atrial Fibrillation: What's it All About? (AFib Overview)



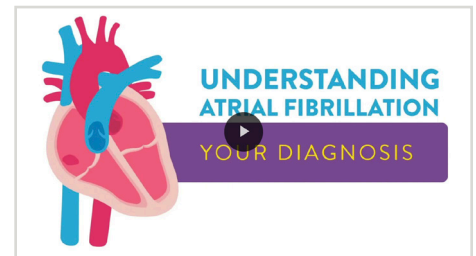
Link: <https://bit.ly/3CrzplE>

What is Atrial Fibrillation? (Epidemiology of Disease and Symptoms)



Link: <https://bit.ly/3ozXKRn>

Understanding Atrial Fibrillation: Your Diagnosis (What to Expect During Cardiac Ablation)



Link: <https://bit.ly/2YQtaKm>

Link to these award-winning animations on YouTube.



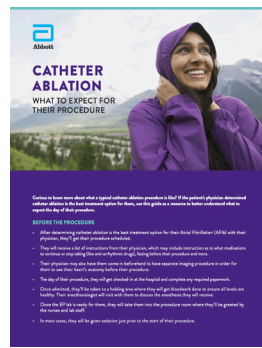
The brochures below can be found at: <https://bit.ly/3kDJlCD>



Link: <https://bit.ly/3Ck06Zr>



Link: <https://bit.ly/3wRselD>



Link: <https://bit.ly/3ouemtM>



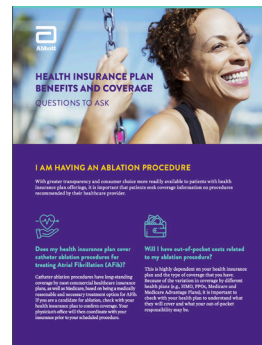
Link: <https://bit.ly/3FjCpSY>



Link: <https://bit.ly/3Fhf6Js>



Link: <https://bit.ly/3CHYQzF>



Link: <https://bit.ly/3ClglWk>

## USING THESE BROCHURE LINKS

These links can be embedded in your educational communications to patients.



## DISCLAIMER

The information provided is not intended for medical diagnosis or treatment or as a substitute for professional medical advice. Consult with a physician or qualified healthcare provider for appropriate medical advice.

### ABOUT THE DISCLAIMER

This is the disclaimer we suggest you use with the content we've provided in this kit.

#### **Abbott**

One St. Jude Medical Dr., St. Paul, MN 55117 USA, Tel: 1 651 756 2000  
Abbott.com

<sup>™</sup> Indicates a trademark of the Abbott group of companies.

‡ Indicates a third party trademark, which is property of its respective owner.

© 2021 Abbott. All Rights Reserved.

MAT-2110160 v1.0 | Item approved for use in the United States only.

