

# PATIENT LIFETIME MANAGEMENT

Caring for TAVI patients means considering not only their needs today, but also how you can empower a lifetime of better care, from the initial implantation to the next intervention.

## 1 TODAY

Designed for easy, calm, and stable deployment.

### DELIVERABILITY

### EASE OF USE

## 2 TOMORROW

Excellent hemodynamics.<sup>1</sup>

### SINGLE-DIGIT GRADIENTS<sup>1</sup>

### MINIMAL PROSTHESIS-PATIENT MISMATCH<sup>2</sup>

### EXCELLENT PVL MITIGATION<sup>1</sup>

## 3 THE ROAD AHEAD

Designed for coronary access for future procedures.

### CORONARY ACCESS

### LOWEST NEOSKIRT HEIGHT<sup>3\*</sup>



# FOR TODAY, TOMORROW, AND THE ROAD AHEAD.

SEE WHY NAVITOR MAY BE THE RIGHT VALVE FOR YOUR PATIENTS.

1

## TODAY

### DELIVERABILITY

### EASE OF USE

2

## TOMORROW

### SINGLE-DIGIT GRADIENTS<sup>1</sup>

### MINIMAL PROSTHESIS-PATIENT MISMATCH<sup>2</sup>

### EXCELLENT PVL MITIGATION<sup>1</sup>

3

## THE ROAD AHEAD

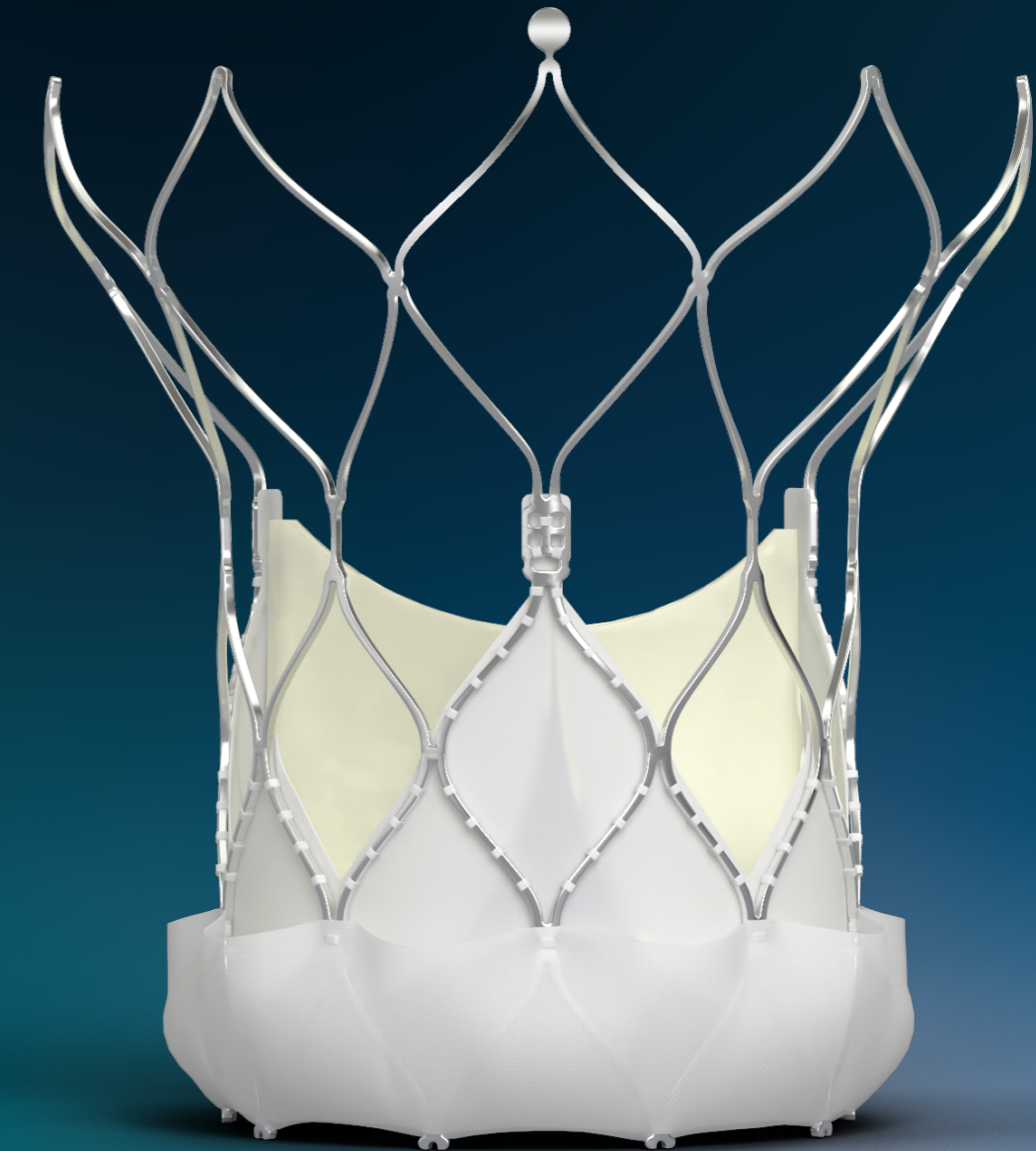
### CORONARY ACCESS

### LOWEST NEOSKIRT HEIGHT<sup>3\*</sup>

TO LEARN MORE, CONTACT YOUR LOCAL TAVI TERRITORY MANAGER.

## NAVITOR™ TAVI SYSTEM

# RIGHT VALVE. RIGHT TIME.



\*Among commercially available self-expanding TAVI valves as of 6 April 2023.

\*\*14 F equivalent: integrated sheath diameter for patients requiring 23 mm or 25 mm valve. 15 F equivalent: integrated sheath diameter for patients requiring 27 mm or 29 mm valve.

<sup>1</sup>The testimonial does not provide any indication, guide, warranty, or guarantee as to the response a patient may have to the treatment or effectiveness of the product or therapy in discussion. Opinions about the treatment discussed can and do vary and are specific to the individual and might not be representative of others.

<sup>2</sup>Based on Abbott internal testing.

<sup>3</sup>Prosthesis-patient mismatch (PPM) classified according to VARC 2 criteria and adjusted for BMI.

<sup>4</sup>For Portico 25 mm valve.

**References:** 1. Smith D. One-year clinical trial results with a next-generation aortic transcatheter heart valve. Presented at: EuroPCR conference; May 17-20, 2022. 2. Sultan I. Hemodynamic outcomes and prosthesis-patient mismatch of the Navitor valve. Presented at: TVT 2022. June 8-10, 2022. 3. Akodad M, Sellers S, Gulsin GS, et al. Leaflet and neoskirt height in transcatheter heart valves: implications for repeat procedures and coronary access. *JACC Cardiovasc Interv.* 2021;14(20):2298-2300. doi:10.1016/j.jcin.2021.07.034 4. Abbott data on file 90346620. 5. Abbott data on file 90859610.

**CAUTION:** This product is intended for use by or under the direction of a physician. Prior to use, reference the Instructions for Use inside the product carton (when available) or at [efu.abbottvascular.com](http://efu.abbottvascular.com) or at [medical.abbott/manuals](http://medical.abbott/manuals) for more detailed information on Indications, Contraindications, Warnings, Precautions, and Adverse Events.

Information contained herein for **DISTRIBUTION in Australia and New Zealand ONLY**. Always check the regulatory status for the device in your region.

Illustrations are artist's representations only and should not be considered as engineering drawings or photographs.

Photo(s) on file at Abbott.

#### Abbott

Abbott Medical Australia Pty Ltd, 299 Lane Cove Road, Macquarie Park, NSW 2113, Ph: 1800 839 259.

Abbott Medical New Zealand Ltd, 4 Pacific Rise, Mount Wellington, Auckland 1060, Tel: 0800 756 269.

™ Indicates a trademark of the Abbott group of companies.

©2023 Abbott. All rights reserved. MAT-2303032 v1.0 | Item approved for ANZ use only.



Information contained herein for **DISTRIBUTION in Australia and New Zealand ONLY**. Always check the regulatory status for the device in your region.



Information contained herein for **DISTRIBUTION in Australia and New Zealand ONLY**. Always check the regulatory status for the device in your region.

# TODAY.

## EASE OF USE.

Controlled deployment provides **stable** and **accurate** valve placement.

A self-expanding valve with **early leaflet functionality** for **hemodynamic stability** throughout the procedure.

## EASE OF DELIVERY.

- 14 F delivery system with 5.0 mm minimum vessel diameter\*\*
- Low profile, highly flexible catheter
- Hydrophilic coating reduces friction by 98%<sup>4</sup>

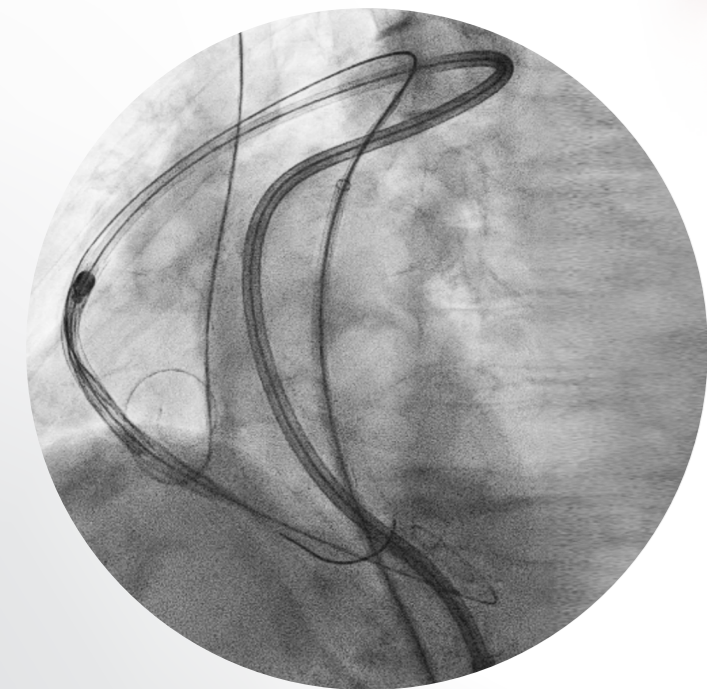
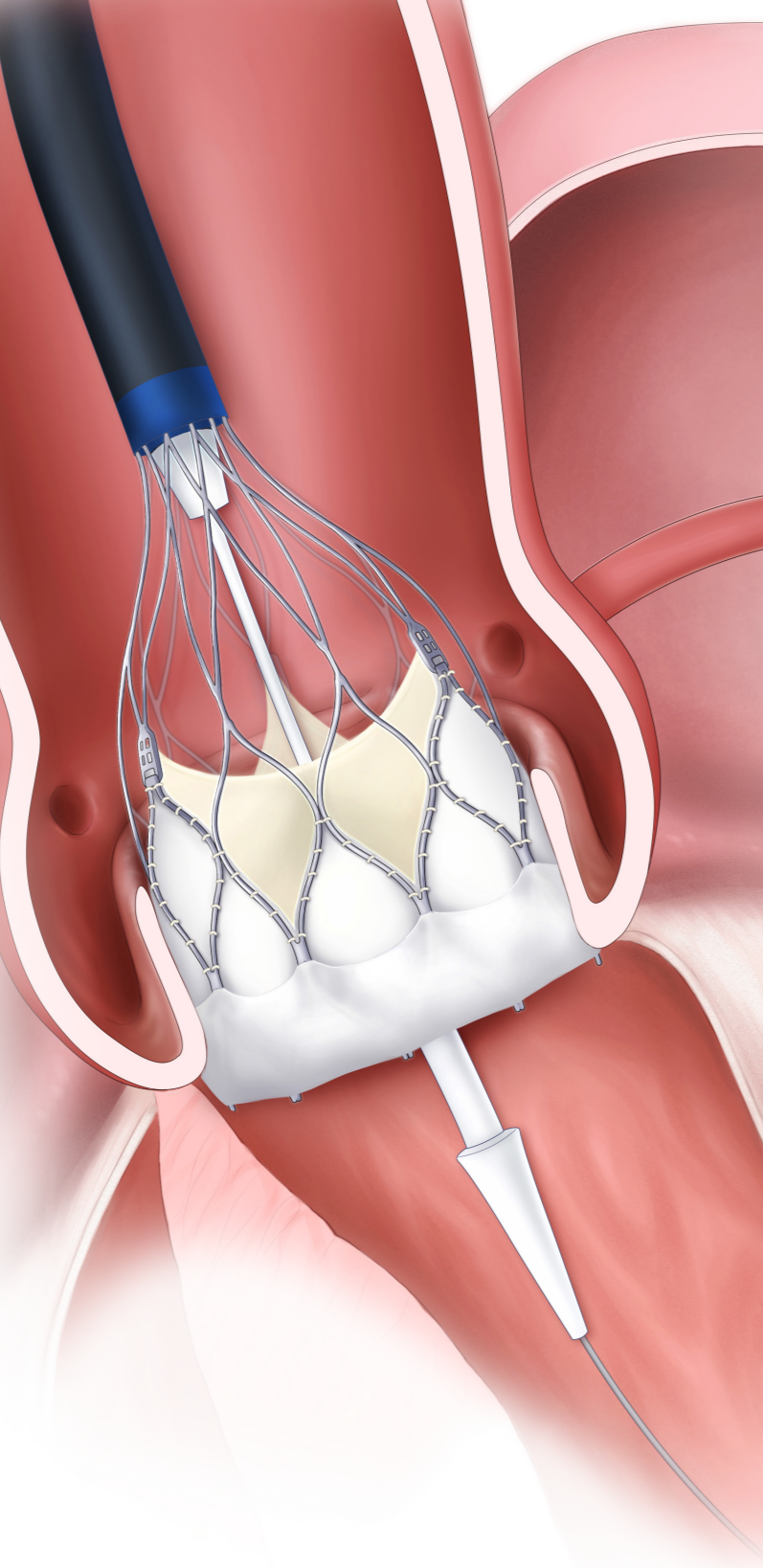


Image courtesy of Dr. Sumanto Mukhopadhyay, St. Bartholomew's Hospital, UK.



**“Easy to implant, but also easy to teach and to reproduce.”**

– Maurizio Taramasso, MD, PhD<sup>5</sup>

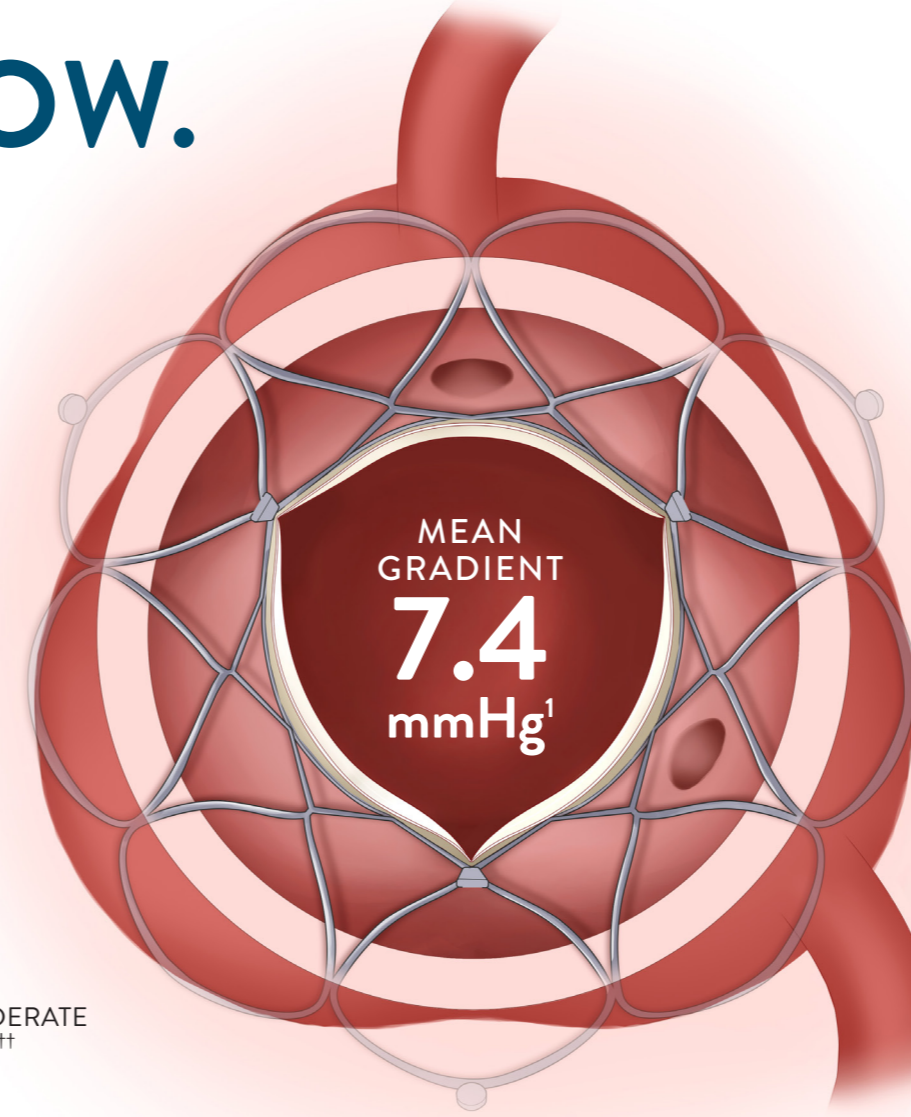
# TOMORROW.

## SINGLE-DIGIT GRADIENTS<sup>1</sup>

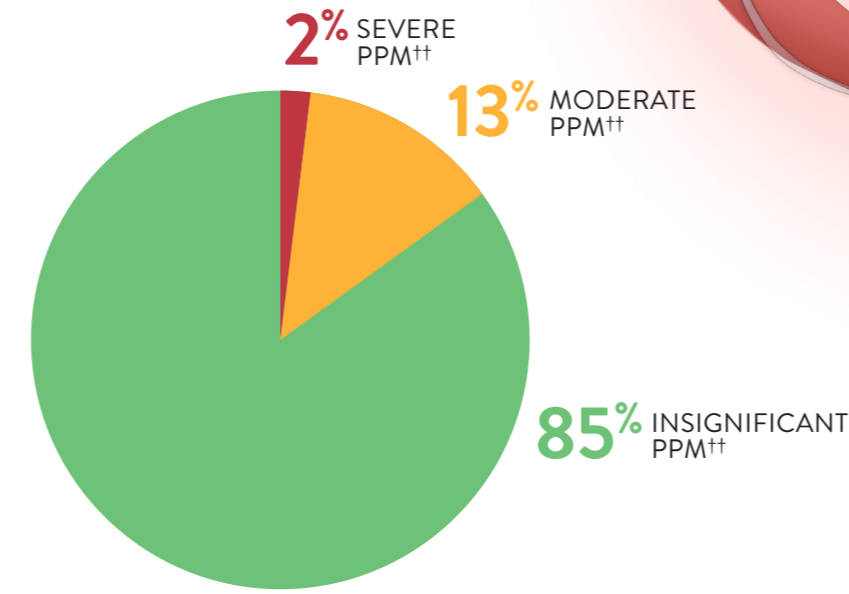
- Intra-annular leaflet design that delivers single-digit gradients<sup>5†</sup>

**“Future durability of a valve is determined by hemodynamics.”**

– Dave Smith, MD<sup>5</sup>



## MINIMAL PROSTHESIS-PATIENT MISMATCH (PPM)<sup>2</sup>



## SMART SEALING—PVL MITIGATION

30-DAY ECHO CORE LAB DATA<sup>1</sup>



# THE ROAD AHEAD.

## DESIGNED FOR UNCOMPROMISED CORONARY ACCESS

- Intra-annular leaflet design
- Large-cell geometry

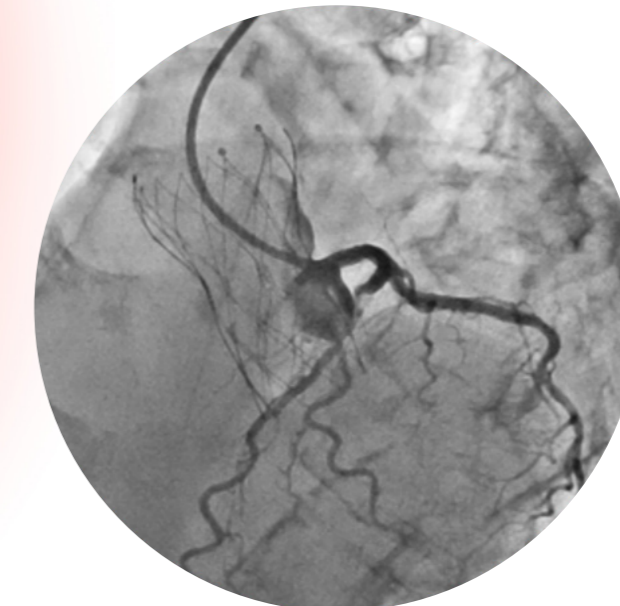
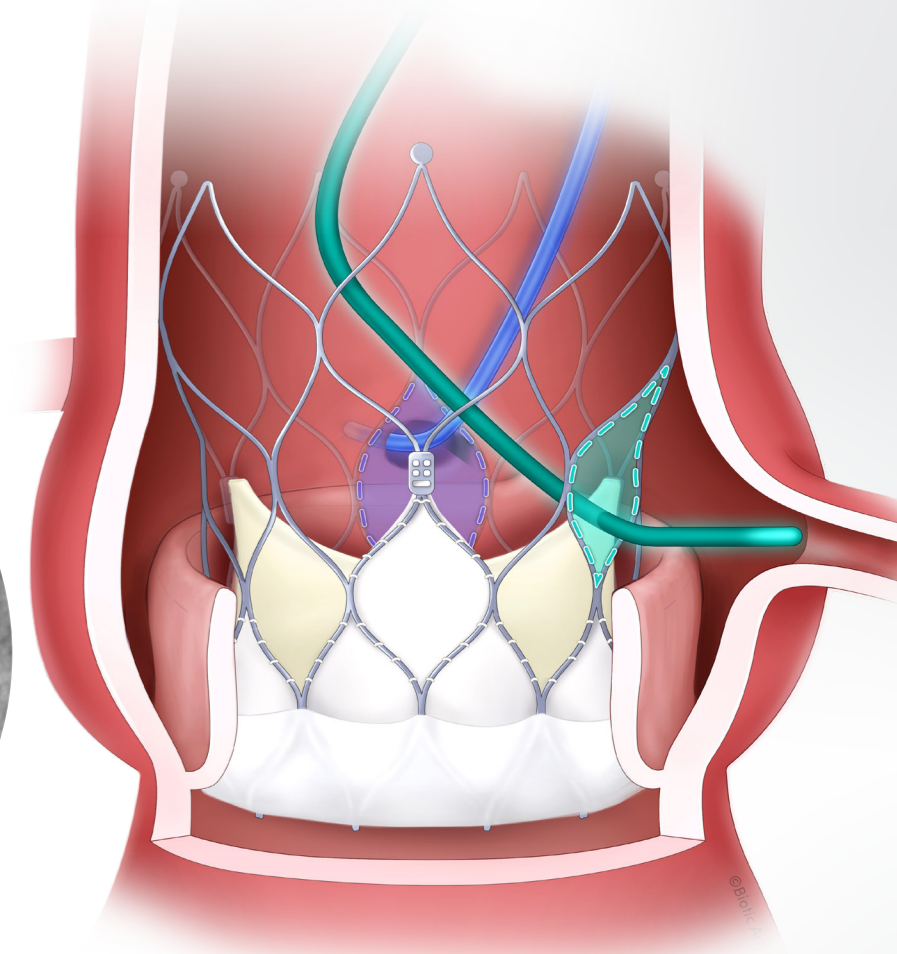


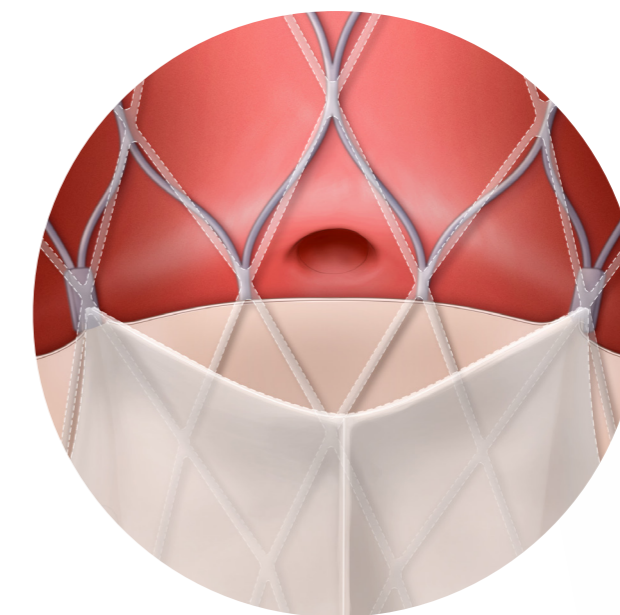
Image courtesy of Dr. Norio Tada, Sendai Kousei Hospital, Japan.



## LOWEST NEOSKIRT HEIGHT<sup>3\*</sup>

Among commercially available self-expanding valves, Abbott's TAVI system offers the lowest neoskirt height.

**23 mm<sup>‡</sup>**  
UP TO 24% LOWER THAN OTHER VALVES<sup>3\*</sup>



For illustrative purposes only. TAVI frame used is not meant to depict any specific valve.

\*As of 6 April 2023.

Information contained herein for DISTRIBUTION in Australia and New Zealand ONLY. Always check the regulatory status for the device in your region.

Information contained herein for DISTRIBUTION in Australia and New Zealand ONLY. Always check the regulatory status for the device in your region.

Information contained herein for DISTRIBUTION in Australia and New Zealand ONLY. Always check the regulatory status for the device in your region.