

# Tailoring MV Repair with MitraClip™ Results in Unparalleled Clinical Outcomes **Sustained at 1 Year**

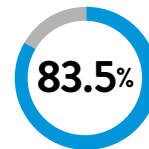
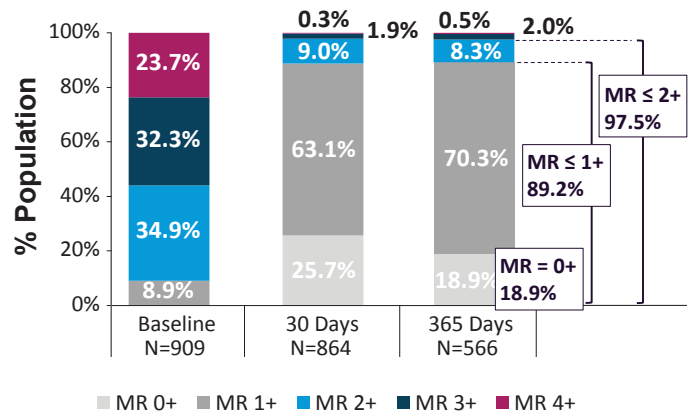
## STUDY DESIGN

Prospective, multi-center, single arm, international, post-market, real world, observational study conducted in United States and Europe with outcomes independently adjudicated by Clinical Events Committee (CEC) and Echocardiographic Core Laboratory (ECL)

DEMOGRAPHICS & ECHO MEASURES <sup>1</sup>	OVERALL (N=1041)
Mean Age (years)	77.3
Male	54.9%
STS Repair Score	6.3 ± 6.3
% SMR	49.5% (413/835)
Effective Regurgitant Orifice Area (EROA, cm <sup>2</sup> )	0.35± 0.18
NYHA III/IV	78.5%
Baseline TR of 3+ or 4+	21.5%
Mitral Valve Complexity <sup>***</sup>	18.2% (156/858)

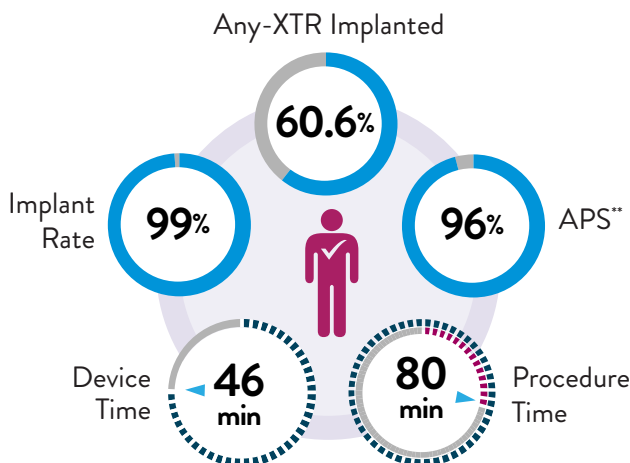
## HIGHEST MR REDUCTION WITH TMVr<sup>1,†</sup>

89% MR ≤ 1+ at 1 Year Follow-Up with MitraClip Tailored Repair



MR ≤ 1+ at 1 Year in Subjects with Baseline MR ≥ 3+

## PREDICTABLE PROCEDURE EXPERIENCE WITH MULTIPLE CLIP SIZE<sup>2</sup>



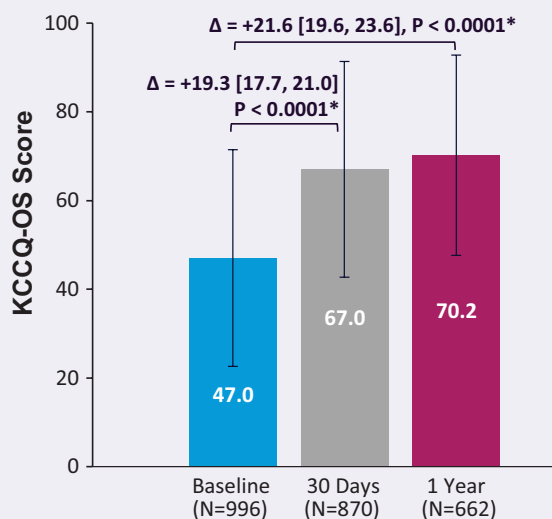
## SAFETY PROFILE DURABLE OVER TIME<sup>1</sup>

Low Rate of Adverse Events at 1 Year

ADVERSE EVENTS <sup>1</sup>	EXPAND (N=1041)
All-cause Mortality	14.9% (147)
MI	1.2% (12)
Stroke	1.7% (18)
Leaflet Adverse Events (LAE) <sup>3</sup>	2% (20)
Single Leaflet Device Attachment (SLDA)	1.7% (18)
Leaflet injury	0.4% (4)
MV Reintervention	1.9% (20)
MV Stenosis	0.5% (5)

## LARGEST 1 YEAR IMPROVEMENT IN QUALITY OF LIFE<sup>1,†</sup>

21.6 Points of Improvement in KCCQ-OS at 1 Year

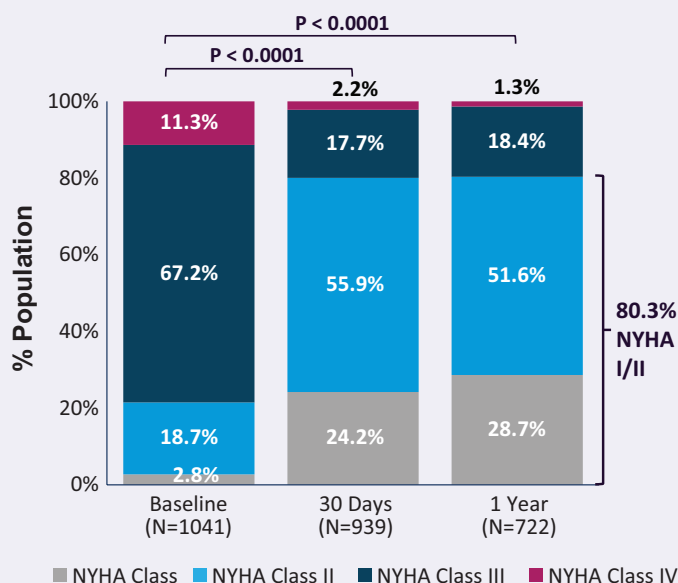


\*Pairwise comparison between Baseline and 1 Year (n=648); Baseline and 30 day (n=853); 95% CI shown in brackets

Note: Health-related quality of life measured by KCCQ Overall Summary score

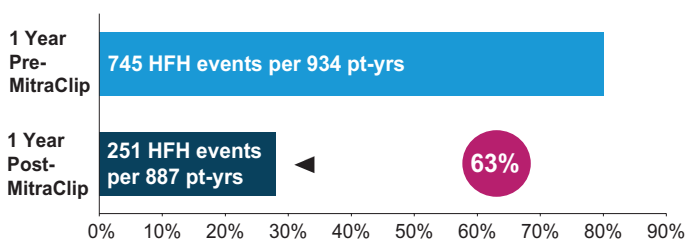
## SIGNIFICANT IMPROVEMENT IN FUNCTIONAL STATUS SUSTAINED AT 1 YR<sup>1</sup>

80% NYHA I/II Sustained at 1 Year



## HIGHEST REDUCTION IN ANNUALIZED HF HOSPITALIZATION<sup>1,†</sup>

63% Reduction in HF Hospitalization Rate 1 Year Pre-Post MitraClip\*



\*Paired analysis of relative risk (RR) on annualized rate of events per patient year (p<0.001)

### REFERENCES:

1. Kar S. Core-Lab Adjudicated Contemporary Clinical Outcomes at 1 Year with MitraClip™ (NTR/XTR) System from Global EXPAND Study. Data presented at TCT 2020.
2. Rottbauer W. D. Contemporary Clinical Outcomes with MitraClip™ (NTR/XTR) System: Core-lab Echo Results from +1000 Patient the Global EXPAND Study. Data presented at PCR 2020.
3. Asch F. Mitral Valve Leaflet Adverse Events with MitraClip™ (NTR/XTR) from the Global EXPAND Study: Expert Panel Review and Recommendations. Data presented at PCR 2020.

\*\*APS defined as successful implantation of the MitraClip device with resulting MR severity of 2+ or less on discharge Echocardiogram (30-day echocardiogram is used if discharge is unavailable or uninterpretable). Subjects who die or undergo mitral valve surgery before discharge are considered to be an APS failure.

\*\*\*ECL MV Complexity assessment Criteria: Presence of at least one of the following anatomical conditions: — Primary Jet Outside of A2P2; — presence of more than one significant Jet; — presence of an extremely wide jet; — small valve; — calcification landing zone; — minimal leaflet tissue for attachment; — presence of severely degenerative leaflets or wide fail gaps or widths.

†Reported to Date

CAUTION: This product is intended for use by or under the direction of a physician. Prior to use, reference the Instructions for Use, inside the product carton for more detailed information on Indications, Contraindications, Warnings, Precautions and Adverse Events. Information contained herein for DISTRIBUTION in Australia and New Zealand ONLY.

Illustrations are artist's representations only and should not be considered as engineering drawings or photographs. Photos on file at Abbott.

Abbott Medical Australia Pty Ltd: 299 Lane Cove Road, Macquarie Park, NSW, Australia 2113 Tel: 1800 839 259  
 Abbott Medical NZ Ltd: Ground Floor, Bldg D, 4 Pacific Rise, Mount Wellington, Auckland 1060 Tel: 0800 656 233

™ Indicates a trademark of the Abbott Group of Companies

www.aus.abbott

©2020 Abbott. All rights reserved. MAT-2010098 | Item approved for ANZ use only.

