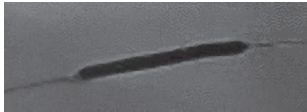


Supera™

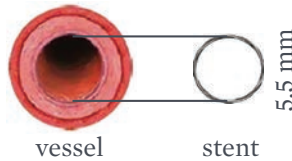
Peripheral Stent System

THREE KEYS FOR OPTIMAL STENT DEPLOYMENT

- 1 PRE-DILATE**
- Pre-dilate the lesion to \geq the outer diameter of the stent
 - Longer inflation times recommended



- 2 SIZE 1:1**
- Match stent size 1:1 to vessel diameter
 - Do not oversize the stent

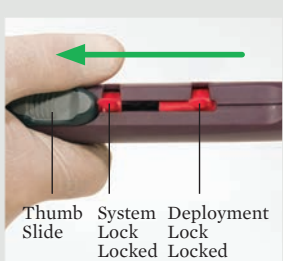
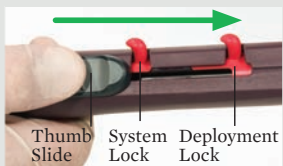
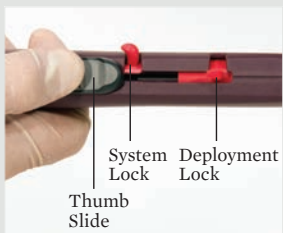


- 3 DEPLOY SLOWLY**
- Rotate System Lock to unlocked position
 - Magnify imaging to observe cell geometry
 - Use short, even throws of the Thumb Slide
 - Open the Deployment Lock and fully advance Thumb Slide to completely release the stent
 - Visually confirm stent release
 - Retract the tip and lock the Thumb Slide before withdrawal
 - Post-dilate as needed

SUPERA™ STENT PREPARATION AND SIZING CHART

LABELED STENT DIAMETER (OUTER DIAMETER)	REFERENCE VESSEL	RECOMMENDED MINIMUM INFLATED BALLOON DIAMETER
4.5 mm	4.0 mm – 4.5 mm	\geq 4.5 mm
5.5 mm	5.0 mm – 5.5 mm	\geq 5.5 mm
6.5 mm	6.0 mm – 6.5 mm	\geq 6.5 mm
7.5 mm	7.0 mm – 7.5 mm	\geq 7.5 mm

Deployment Steps and Technique



1. Flush the delivery system with saline, wipe the outer sheath to activate the hydrophilic coating, and load the distal end of the tip onto a 0.014" or 0.018" guide wire.
2. Advance the catheter until the Distal Sheath Marker and Stent Length Marker encompass the target lesion.
3. Rotate only the System Lock to the unlocked position.
4. Increase and maintain magnification for entire procedure to better visualize stent deployment.
5. Under fluoroscopy, initiate stent deployment by advancing the Thumb Slide while allowing the outer sheath to retract proximally.
6. Under fluoroscopy, continuously and slowly retract and advance the Thumb Slide multiple times. Shorter Thumb Slide advancements may provide greater control. Repeat until Thumb Slide advancement no longer deploys the stent.
7. Rotate the Deployment Lock to the unlocked position and fully advance the Thumb Slide to completely release the stent.
8. Confirm under fluoroscopy that the entire stent is released.
9. Fully retract the Thumb Slide to the starting position, then rotate the System Lock and Deployment Lock into the locked position.
10. Remove the device under fluoroscopy.
11. Post-dilate as needed.

See Instructions for Use for additional information.

SUPERA™ IS LIKE NO OTHER STENT

CAUTION: This product is intended for use by or under the direction of a physician. Prior to use, reference the Instructions for Use, inside the product carton (when available) or at vascular.eifu.abbott or at medical.abbott/manuals for more detailed information on Indications, Contraindications, Warnings, Precautions and Adverse Events. This material is intended for use with healthcare professionals only.

Information contained herein for DISTRIBUTION in Australia and New Zealand ONLY.

Illustrations are artist's representations only and should not be considered as engineering drawings or photographs. Photos on file at Abbott.

Abbott Vascular Division of Abbott Medical Australia Pty Ltd: 299 Lane Cove Road, Macquarie Park NSW 2113. Phone: 1800 550 939

Abbott Vascular Division of Abbott Medical New Zealand Limited: Grd Flr, Bldg D, 4 Pacific Rise, Mount Wellington Auckland 1060. Phone: 0800 827 285

™ Indicates a trademark of the Abbott Group of Companies.

©2021 Abbott. All rights reserved. MAT-2109148 v2.0

