



CONVENIENT. CONNECTED. SHARED.

Introducing the myCardioMEMS™
Application for the CardioMEMS™
HF System.



Convenient.

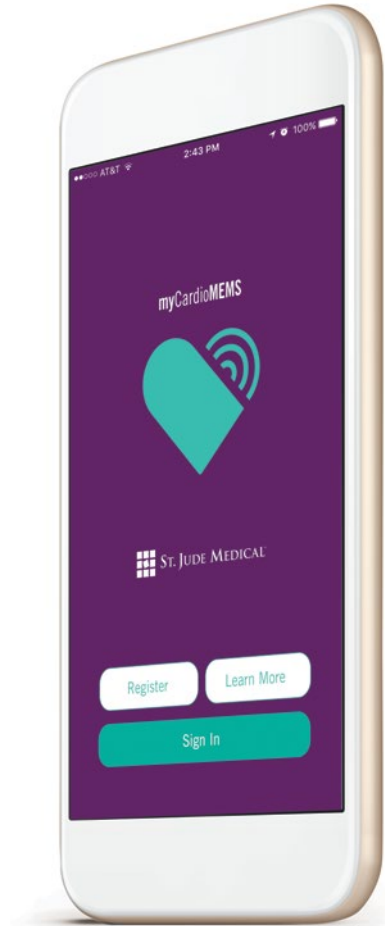
Receive daily medication and CardioMEMS™ HF System reading reminders to further engage you in the management of your heart failure.

Connected.

Have messages from your clinic sent directly to your smartphone or tablet, including instructions to adjust your medications based on your PA pressure readings.

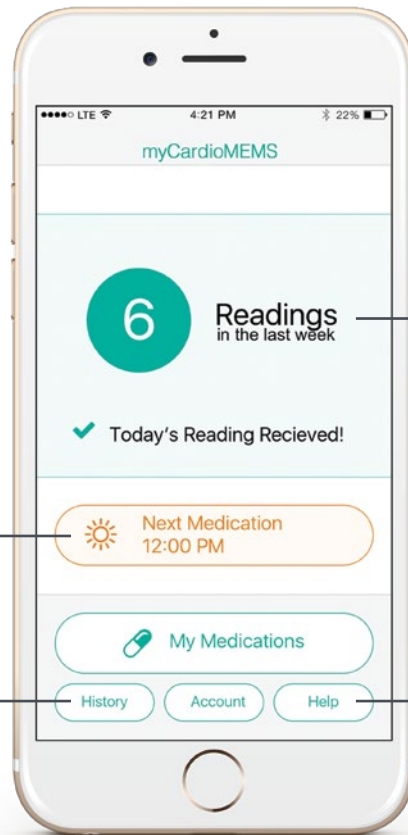
Shared.

Involve your caregiver in the management of your heart failure with his or her own myCardioMEMS™ app account.



The myCardioMEMS™ app can be downloaded from the App store® for your iPhone® mobile digital device and on Google Play® for your Android® device.

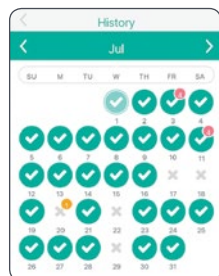
With the myCardioMEMS™ App YOU CAN:



SEE REAL-TIME TRANSMISSION STATUS of your CardioMEMS™ HF System readings.

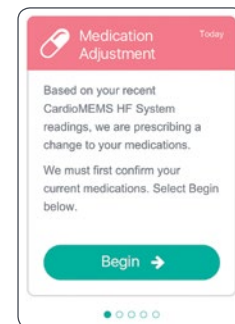
GET REMINDERS to take your heart failure medication.

VIEW MONTHLY HISTORY of transmissions and messages from clinics.



WATCH TUTORIALS to learn as you go.

RECEIVE NOTIFICATIONS from your clinic to adjust your heart failure medications based on your PA pressure readings.



Abbott

One St. Jude Medical Dr., St. Paul, MN 55117 USA, Tel: 1 651 756 2000
HeartFailureAnswers.com
St. Jude Medical is now Abbott.

Rx Only

Brief Summary: Prior to using these devices, please review the Instructions for Use for a complete listing of indications, contraindications, warnings, precautions, potential adverse events and directions for use.

Indications and Usage: The CardioMEMS™ HF System is indicated for wirelessly measuring and monitoring pulmonary artery (PA) pressure and heart rate in New York Heart Association (NYHA) Class III heart failure patients who have been hospitalized for heart failure in the previous year. The hemodynamic data are used by physicians for heart failure management and with the goal of reducing heart failure hospitalizations.

Contraindications: The CardioMEMS HF System is contraindicated for patients with an inability to take dual antiplatelet or anticoagulants for one month post implant.

Potential Adverse Events: Potential adverse events associated with the implantation procedure include, but are not limited to the following: Infection, Arrhythmias,

Bleeding, Hematoma, Thrombus, Myocardial infarction, Transient ischemic attack, Stroke, Death, and Device embolization.

Limitations: Patients must use their own Apple® or Android® mobile device to receive and transmit information to the myCardioMEMS™ mobile app. To do so the device must be powered on, app must be installed and data coverage (cellular or Wi-Fi®) available. The myCardioMEMS™ app can provide notification of medication adjustments and reminders, requests for lab work and acknowledgement that the PA pressure readings have been received. However there are many internal and external factors that can hinder, delay, or prevent acquisition and delivery of the notifications and patient information as intended by the clinician. These factors include: patient environment, data services, mobile device operating system and settings, clinic environment, schedule/configuration changes, or data processing.

™ Indicates a trademark of the Abbott group of companies.

‡ Indicates a third party trademark, which is property of its respective owner.

© 2018 Abbott. All Rights Reserved.

25654-SJM-MER-1116-0092(1) | Item approved for U.S. use only.

