



THE RIGHT TOOLS FOR HIGH-DENSITY MAPPING

HIGH-DENSITY DIAGNOSTIC MAPPING CATHETER PORTFOLIO

Diagnostic Mapping Catheters to Meet the Demands of Complex Cases

ACCURACY MATTERS

SEE THINGS DIFFERENTLY

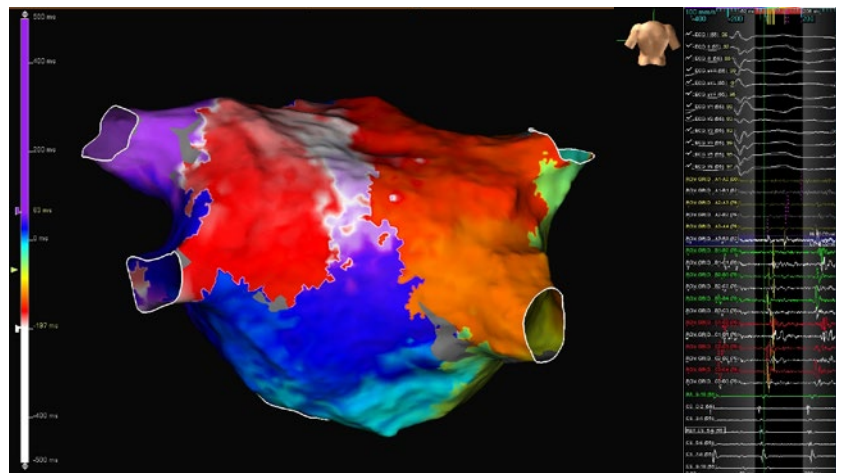


THE ADVISOR™ HD GRID MAPPING CATHETER, SENSOR ENABLED™

is taking high-density cardiac mapping in a whole new direction:

- **Fast**¹ — Fast mapping time and point collection when used in conjunction with the EnSite Precision™ Cardiac Mapping System AutoMap and TurboMap features
- **Accurate**² — Enables voltage recordings in direction independent mapping³
- **Ease of Use**⁴ — Bi-directional high-density mapping catheter designed to maneuver within all chambers

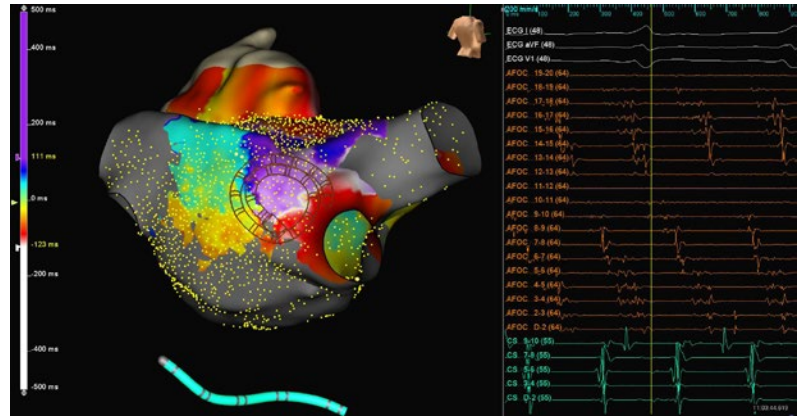
The Advisor™ HD Grid Mapping Catheter, Sensor Enabled™ design has equidistant spacing allowing an HD wave bipole recording along and across the splines to help map substrate and account for directionality.³ It can also be used as a traditional high-density mapping catheter.



INQUIRY™ AFOCUS II™ Double Loop Catheter

Single-catheter solution for streamlined diagnostics and high-density mapping.

- Versatility: The multi-loop, evenly spaced electrodes offer physicians the ability to use the catheter for creating geometry and generating highly detailed maps.
- Efficiency: High electrode density, multi-loop design enables efficient collection of 19 bipolar electrograms with a single touch of the catheter.

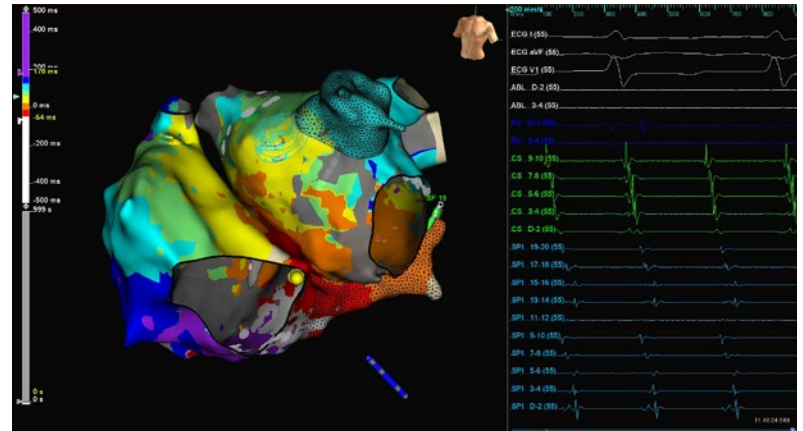


REFLEXION HD™ High-Density Mapping Catheter

This high-density, duo-decapolar, multi-loop mapping catheter is the perfect tool when sharp, local electrograms matter.

Create accurate high-density geometries and detailed electrical maps leveraging the mapping capabilities of the EnSite Precision™ Cardiac Mapping System or EnSite Velocity™ Cardiac Mapping System. This combination of features provides physicians faster and higher resolution mapping of multiple tachycardias as compared to single-point mapping with an ablation catheter.⁵

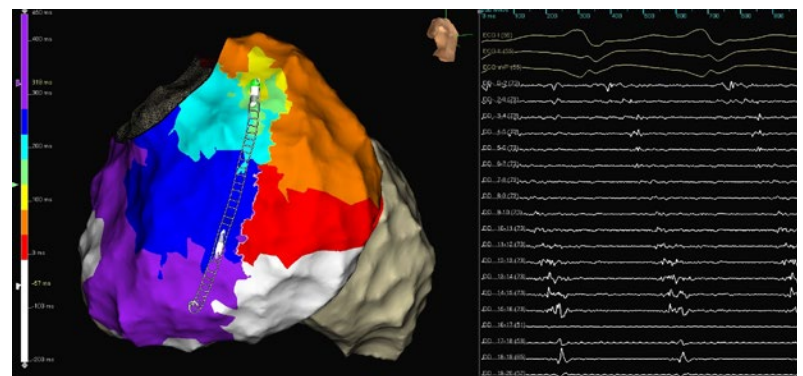
- The dual-loop configuration offers high-density point collection in discrete areas.
- Bi-directionality enables ease of movement throughout the chamber.
- Ten bipoles (1 mm spacing) focus on near field signal.



LIVEWIRE™ Steerable Duo-Decapolar Catheter

This duo-decapolar catheter provides high-density mapping over a large area and can help visualize activation sequences, electroanatomic substrate and late potentials.⁶

- Atraumatic, smooth manipulation characteristics.
- Catheter provides high-fidelity signals from closely spaced bipoles.
- Rapidly creates high-density maps in sinus rhythm and tachycardias, and the electrode span allows for sampling of large regions such as in ventricular substrate.



ABBOTT'S PORTFOLIO OF HIGH-DENSITY DIAGNOSTIC MAPPING CATHETERS MAKES IT EASY FOR PHYSICIANS TO QUICKLY AND EFFICIENTLY CREATE ACCURATE MAPS.^{5,6}

Use these catheters along with the EnSite™ AutoMap or TurboMap modules for fast data acquisition. Simultaneously collect anatomic and electrical points from multiple electrodes to build anatomy, voltage and timing maps.⁷

Advisor™ HD Grid Mapping Catheter, Sensor Enabled™

Reorder Number	Description	Curve	Number of Electrodes	Grid Electrode Spacing	Grid Dimensions	Usable Length
D-AVHD-DF16	Sensor Enabled™ Bi-D High-Density Mapping Catheter	DF	Grid: 16 Shaft: 2	3 mm Equidistant Spacing	13 x 13 mm ²	110

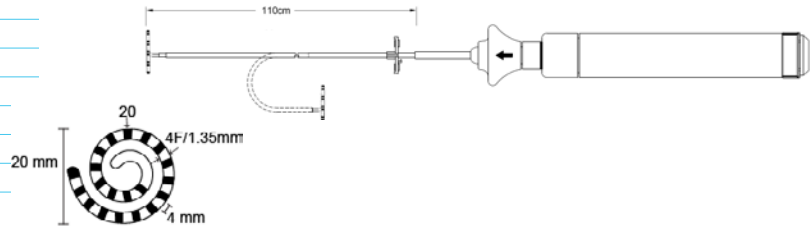
Inquiry™ AFocus II™ Double Loop Catheter

PRODUCT SPECIFICATIONS

Feature	Specification
Loop Style	Fixed Radius Double Loop
Loop Diameter	20 mm (outer loop)
Catheter Size	4 F Loop, 7 F Shaft
Electrodes	20
Electrode Size	2 mm Tip, 1 mm Others
Electrode Spacing	4 mm, Evenly Spaced
Shaft Deflection	180° Uni-directional
Usable Length	110 cm
Handle	Push-pull Style

ORDERING INFORMATION

Item Number	Product Description
IBI-87008	Inquiry AFocus II Diagnostic Catheter with Double Loop
IBI-85931	1924-S Connecting Cable, 150 cm



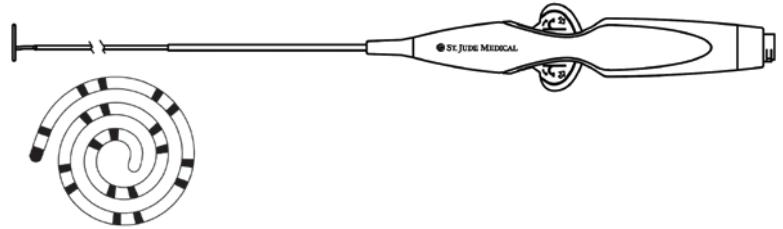
Reflexion HD™ High-Density Mapping Catheter

PRODUCT SPECIFICATIONS

Feature	Specification
Loop Style	Fixed Radius Double Loop
Loop Diameter	25 mm (Outer Loop)
Catheter Size	5 F Loop, 7 F Shaft
Electrodes	20
Electrode Size	2 mm Tip, 1 mm Others
Electrode Spacing	2-7-2 mm, Bi-polar
Shaft Deflection	180° Symmetric Bi-directional
Usable Length	99 cm
Handle	Rocker Style

ORDERING INFORMATION

Item Number	Product Description
D402864	Reflexion HD Diagnostic Mapping Catheter
401661	Duo-Decapolar Connecting Cable, 150 cm



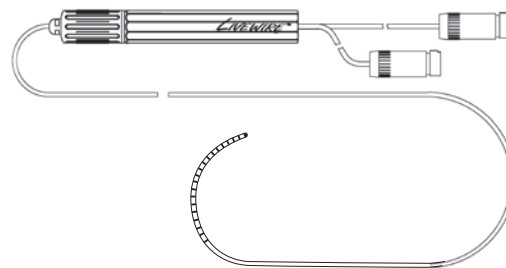
Livewire™ Steerable Duo-Decapolar Catheter

PRODUCT SPECIFICATIONS

Feature	Specification
Catheter Style	Linear Steerable
Catheter Size	7 F Shaft
Electrodes	20
Electrode Size	1 mm Bands
Electrode Spacing	2-2-2 mm, Evenly Spaced
Shaft Deflection	Medium Curl, Uni-directional
Usable Length	115 cm
Handle	Rotary Style

ORDERING INFORMATION

Item Number	Product Description
401908	Livewire Steerable Diagnostic Catheter
401972	Decapolar Connecting Cable, 150 cm (2 cables needed)



1. Abbott. Report on file. 90299533.
2. Abbott. Report on file. 90262900.
3. Abbott. Report on file. 90280703.
4. Abbott. Report on file. 90355919.
5. Bun Sok-Sithikun, Latcu Decebal Gabriel, Delassi Tahar, Jamili Mohammed El, Amoura Alaa Al, Saoudi Nadir. Ultra-High-Definition Mapping of Atrial Arrhythmias. *Circulation journal: official journal of the Japanese Circulation Society*. 2016;80(3):579-586.
6. Tung Roderick, Nakahara Shiro, Maccabelli Giuseppe, Buch Eric, Wiener Isaac, Boyle Noel G., Carbucicchio Corrado, Bella Paolo Della, Shivkumar Kalyanam. Ultra High-Density Multipolar Mapping With Double Ventricular Access: A Novel Technique for Ablation of Ventricular Tachycardia. *Journal of Cardiovascular Electrophysiology*. 2011;22(1):49-56.
7. Heist E, Perna F, Chalhoub F, Danik S, Barrett C, Houghtaling C, ... Mansour M. Comparison of Electroanatomical Mapping Systems: Accuracy in Left Atrial Mapping. *PACE*. 2013;36:626-631.

Abbott

One St. Jude Medical Dr., St. Paul, MN 55117 USA, Tel: 1 651 756 2000
SJM.com
St. Jude Medical is now Abbott.

Rx Only

Brief Summary: Prior to using these devices, please review the Instructions for Use for a complete listing of indications, contraindications, warnings, precautions, potential adverse events and directions for use.

™ Indicates a trademark of the Abbott group of companies.

© 2018 Abbott. All Rights Reserved.

28764-SJM-CAG-0318-0217a | Item approved for U.S. use only.

