



Abbott

# EMBRACE EXCELLENCE EVERY DAY

With the HeartMate 3™ Left  
Ventricular Assist Device for  
the Treatment of Advanced  
Heart Failure

**BOUBA**

HeartMate 3™ LVAD  
Recipient



# HEART FAILURE AND HEARTMATE 3™ LVAD THERAPY

- Heart failure is a serious condition that can get worse over time.<sup>1</sup>
- For people who have advanced heart failure, medicines alone may not be enough and additional therapies need to be considered.<sup>2</sup>
- A left ventricular assist device (LVAD) is a small, implantable device that helps the heart pump blood.
- The HeartMate 3™ LVAD is the latest advancement in LVAD therapy, shown to improve long-term survival and help people have a better quality of life.<sup>3,4</sup>
- Thousands of people with advanced heart failure are living longer, active lives with a HeartMate 3™ LVAD.<sup>3-5</sup>
- Talk to your doctor about the risks, such as stroke and thrombosis, and benefits of HeartMate 3™ LVAD therapy to find out whether it is an option for you.



# HEART FAILURE MEANS THAT THE HEART HAS BECOME TOO WEAK TO SUPPORT THE BODY

Heart failure — sometimes called a weak heart — occurs when the heart is unable to pump enough blood to meet the body's needs. When this occurs, you may feel tired and short of breath, even at rest. It can significantly limit your physical activity and result in a poor quality of life.

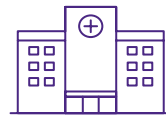
## HEART FAILURE IS A SERIOUS DISEASE THAT CAN LEAD TO DEATH IF NOT MANAGED AND TREATED

6.2 million+

people in the United States have heart failure<sup>6</sup>

~ 377,000

people with heart failure die every year in the United States<sup>7</sup>



People hospitalized for heart failure have a median survival of

2.4 years<sup>8</sup>

## SIGNS OF HEART FAILURE<sup>9</sup>

Check off your symptoms



Tiredness/ fatigue



Weight gain



Lightheadedness and confusion



Trouble breathing



Swelling or feeling bloated



Rapid heart rate



Persistent coughing



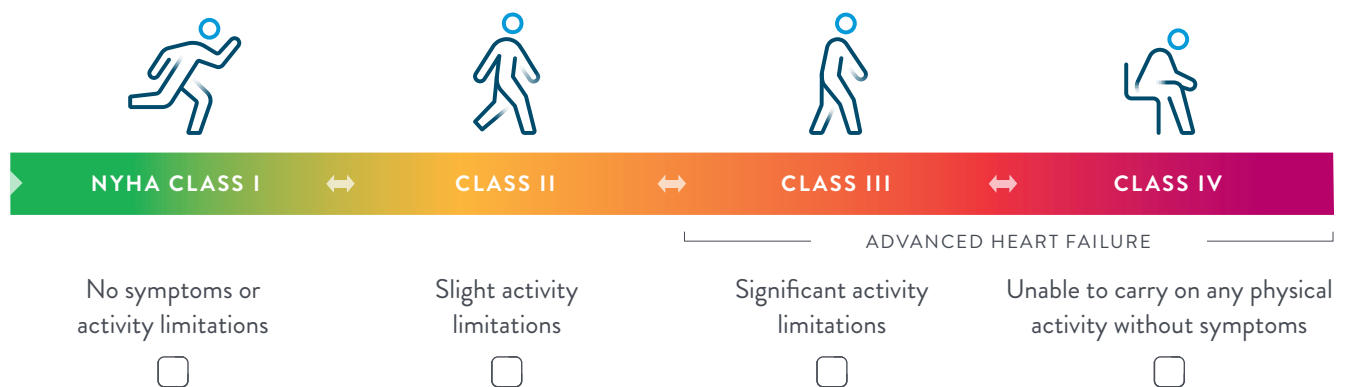
Nausea or lack of appetite

# HEART FAILURE CAN GET WORSE OVER TIME

As symptoms get worse, your doctor may adjust your medicine and recommend getting an evaluation for advanced options to manage your heart failure.<sup>2</sup>

## NEW YORK HEART ASSOCIATION (NYHA) CLASSES OF HEART FAILURE<sup>10</sup>

Check where you fall on the pathway



## IS HEART FAILURE IMPACTING YOUR LIFE?

Check off all that apply

### IN THE LAST 30 DAYS, HAVE YOU BEEN ABLE TO:

- Participate in activities you enjoy?
- Shower and get dressed without stopping?
- Go grocery shopping or take a walk without getting tired or short of breath?
- Sleep lying down without having symptoms?

### QUESTIONS TO ASK YOUR DOCTOR:

- What NYHA class is my heart failure?
- How is my heart failure likely to progress (or get worse)?
- What advanced therapies are available if my heart failure gets worse?



**KYLA**  
HeartMate 3™ LVAD  
Recipient

## FOR PEOPLE WITH ADVANCED HEART FAILURE, **MEDICINES ALONE MAY NOT BE ENOUGH<sup>2</sup>**

If you have advanced heart failure, you and your heart require special care.

In its early stages, heart failure can often be managed with medicines and a healthy lifestyle. As the disease progresses and the heart becomes weaker, medicines may no longer work as well. Relying on medicines only can result in a high risk of death.<sup>11</sup>

Your doctor may discuss additional options with you such as implantable devices, heart transplantation, palliative care or hospice. It may also be recommended that you see a heart failure specialist to be evaluated for advanced therapies to manage and treat your heart failure.

While there is no cure for heart failure, there are options and therapy choices available today for advanced heart failure. **If you are taking your medicines and still have heart failure symptoms, it is important to talk to your doctor.**



for people with advanced heart failure on medical therapy<sup>12</sup>



for people with advanced heart failure on medical therapy and with one or more heart failure hospitalizations<sup>11</sup>

# THE HEARTMATE 3™ LVAD IS A TREATMENT OPTION FOR PEOPLE WITH ADVANCED HEART FAILURE

An LVAD is a proven, well-known choice for people with advanced heart failure (NYHA Class IIIB or IV symptoms). It's a small device that is connected to your heart to help it pump oxygen-rich blood throughout your body.





“ My life changed, for the better. I woke up refreshed. I woke up feeling like a million bucks.”

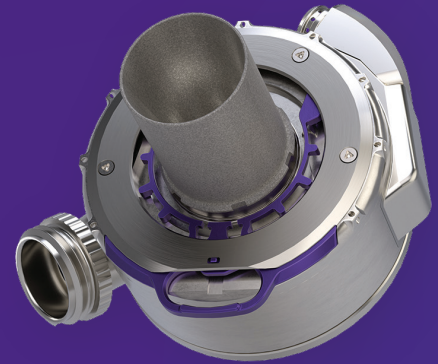
**MARTHA**  
HeartMate 3™ LVAD  
Recipient

This testimonial relates an account of an individual's response to the treatment. This patient's account is genuine, typical and documented. However, it does not provide any indication, guide, warranty or guarantee as to the response other persons may have to the treatment. Responses to the treatment discussed can and do vary and are specific to the individual patient.

# UNDERSTANDING THE HEARTMATE 3™ LVAD

The HeartMate 3™ LVAD is the most advanced LVAD yet. It uses Full MagLev™ Flow Technology, which helps protect the blood as it flows through the pump.

Thousands of people with advanced heart failure are living longer, active lives with a HeartMate 3™ LVAD.<sup>3,5</sup>



## 1 HEART PUMP (LVAD)

Connected to the left side of your heart and moves blood from your heart to the rest of your body.

## 2 DRIVELINE

Transfers power and information between the controller and the heart pump. This component is partially outside of your body.

## 3 BATTERIES

Provide up to 17 hours of uninterrupted power. Power can also be provided by a Mobile Power Unit that is plugged into an electrical wall socket when indoors, at rest or asleep.

## 4 CONTROLLER

Powers and checks the LVAD and driveline. This easy-to-wear controller weighs less than 1 pound and discreetly slips into a front pocket. The controller uses alerts to tell you how the system is working and includes 15 minutes of emergency backup power.





# THE HEARTMATE 3™ LVAD HAS PROVEN CLINICAL OUTCOMES AND EXCELLENT SAFETY

For the first time in LVAD history, 5-year data from the largest clinical trial\* ever conducted is available. The HeartMate 3™ LVAD has been shown to improve long-term survival of patients with advanced heart failure.<sup>3\*\*</sup>



**MEDIAN SURVIVAL EXCEEDING 5 YEARS**

Meaning that an equal number of people lived longer than 5 years as the number of people who died in less than 5 years.

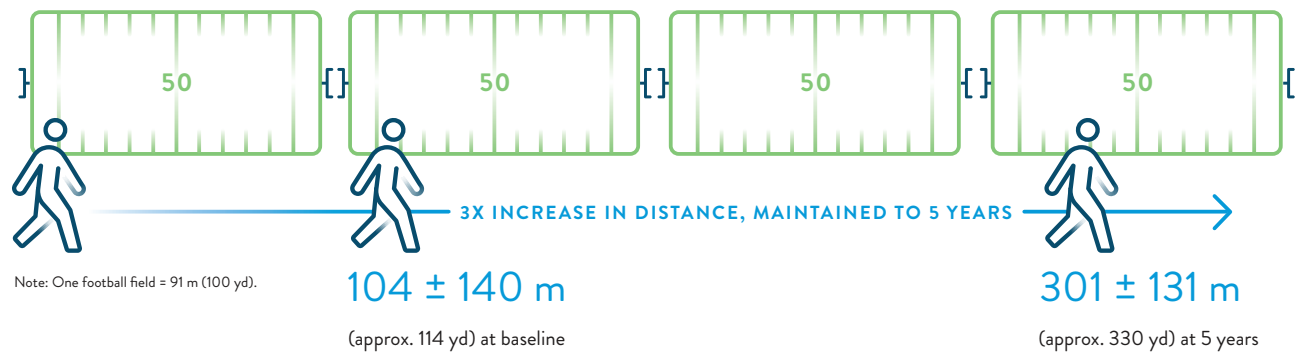


58.4%  
**SURVIVAL AT 5 YEARS**

The **ELEVATE Registry** evaluated the real-world experience of the HeartMate 3™ LVAD in a post-approval setting.<sup>4</sup> 5-year extended follow-up showed:

## SIGNIFICANT INCREASE IN 6-MINUTE WALK DISTANCE

Ability to walk 3 times farther<sup>4</sup>



## IMPROVED SAFETY PROFILE<sup>4</sup>

### STROKE

**10.8%** IN FIRST 2 YEARS      **3.6%** IN YEARS 2-5

In the ELEVATE Registry, all major event types were reduced in the 2–5-year follow-up period compared to 0–2 years. Because the HeartMate 3™ LVAD handles the flow of blood gently, major blood-related events were especially reduced.

Results based on published data from multicenter experience and separate studies, which may involve different patient populations and other variables. Not a head-to-head comparison. Data presented for informational purposes only.



## ABOUT THE HEARTMATE 3™ LVAD PROCEDURE

The HeartMate 3™ LVAD is implanted by a trained cardiac surgeon in a hospital using standard surgical procedures and care. During the surgery, your surgeon will place the LVAD inside your chest and attach it to the left ventricle of the heart and to the aorta, a large blood vessel that carries blood from your heart to the rest of your body. Once the LVAD is in place, a tube — called a “driveline” — is passed through the skin of your abdomen and connected to the controller and a power supply (see the figure on page 9).

After the surgery, you may have to stay in the hospital for 2–4 weeks for close monitoring and recovery. The length of the hospital stay is different for everyone. After you leave the hospital, there will be regular checkups with the LVAD care team. Make sure to talk to your doctor and care team to fully understand both the benefits and the risks of the LVAD procedure.

**LOREN**

HeartMate 3™ LVAD  
Recipient

# RETURN TO THE **ACTIVITIES YOU ENJOY**

- Walking
- Time with family and friends
- Traveling
- Golfing
- Dancing
- Working/volunteering
- Gardening
- Biking

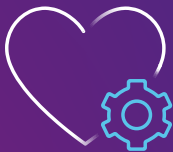
## YOUR ADVANCED HEART FAILURE CENTER WILL GUIDE YOU ON WHICH **ACTIVITIES YOU MAY NEED TO AVOID**

- Sleeping on your stomach
- Taking a bath or swimming
- Playing contact sports
- High levels of static electricity or static discharge
- Having a magnetic resonance imaging (MRI)

### LIVING WITH THE HEARTMATE 3™ LVAD

Many LVAD recipients find they have more energy than they did before because more oxygen-rich blood is moving through their bodies.

You and your caregiver will learn about how to live with a HeartMate 3™ LVAD and manage the equipment by a specialized LVAD care team that will be with you every step of the way before, during and after the surgery.



Check your equipment daily to ensure it's working properly and bring your backup equipment whenever you leave the house



Make sure your LVAD is connected to a power source at all times



Keep your driveline exit site — the part of your body where it is inserted — clean and dry

“Ever since I’ve had my HeartMate 3™ [LVAD], every day has been just amazing. I started biking at 10 weeks.”

**DAVID**

HeartMate 3™ LVAD  
Recipient



This testimonial relates an account of an individual’s response to the treatment. This patient’s account is genuine, typical and documented. However, it does not provide any indication, guide, warranty or guarantee as to the response other persons may have to the treatment. Responses to the treatment discussed can and do vary and are specific to the individual patient.

# THE MORE YOU KNOW, THE MORE CONFIDENT YOU CAN BE ABOUT **YOUR DECISION**

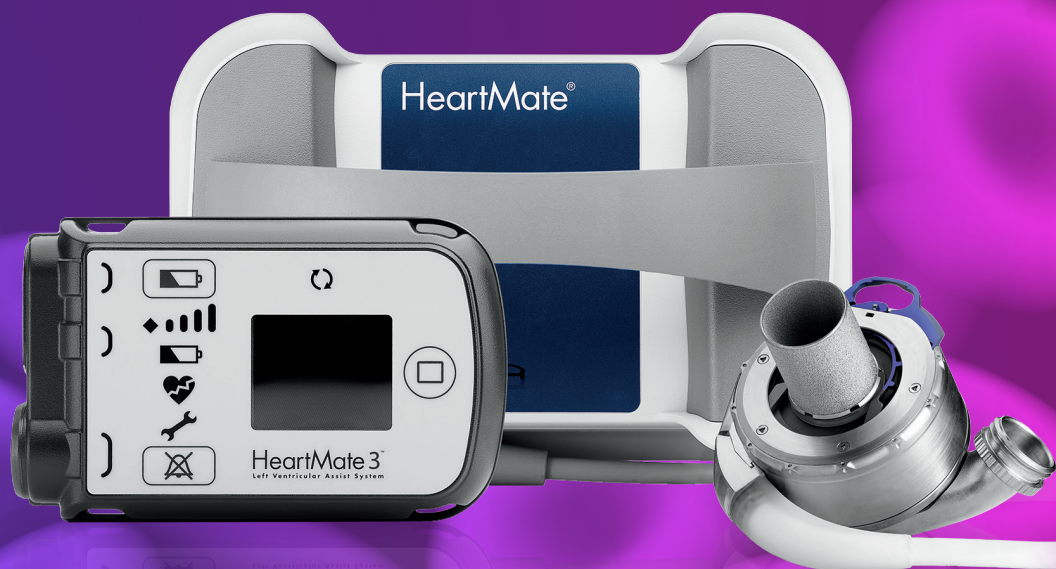
## QUESTIONS YOU MAY WANT TO ASK YOUR DOCTOR

- Am I a candidate for LVAD therapy?
- Should I see an advanced heart failure specialist for evaluation for advanced therapies, including LVAD therapy?
- Are there resources available for me to learn more about HeartMate 3™ LVAD therapy?
- Can I be connected with a Patient Ambassador (and their caregiver) living with a HeartMate™ LVAD?

Visit [Abbott.com/HeartMate](http://Abbott.com/HeartMate) to learn more.

## MOVE FORWARD WITH EXCELLENCE

HEARTMATE 3™ LVAD





# LEARN MORE AT ABBOTT.COM/HEARTMATE

\*A clinical trial is a type of research that studies a test or treatment given to people.

\*\*HeartMate 3™ LVAD demonstrated superiority in event-free survival (primary endpoint) in the MOMENTUM 3 trial compared to HeartMate II™ LVAD.

1. American Heart Association. What is heart failure? Updated May 31, 2017. Accessed June 2021. <https://www.heart.org/en/health-topics/heart-failure/what-is-heart-failure>
2. Abouezzeddine OF, Redfield MM. Who has advanced heart failure?: definition and epidemiology. *Congest Heart Fail.* 2011;17(4):160-168. doi:10.1111/j.1751-7133.2011.00246.x
3. Mehra MR, Goldstein DJ, Cleveland JC, et al. Five-year outcomes in patients with fully magnetically levitated vs axial-flow left ventricular assist devices in the MOMENTUM 3 randomized trial. *JAMA.* 2022;328(12):1233-1242. doi:10.1001/jama.2022.16197
4. Schmitto JD, Shaw S, Garbade J, et al. Long-Term Results in Real World Patients Treated with HeartMate 3 LVAD for Advanced Heart Failure: Data from the ELEVATE Registry. Presented at: European Association for Cardio-Thoracic Surgery (EACTS) Annual Meeting; October 8, 2022; Milan, Italy.
5. Abbott. Data on File as of June 8, 2021. MAT-2002006 v6.0.
6. Benjamin EJ, Munnner P, Alonso A, et al. Heart disease and stroke statistics – 2019 update: a report from the American Heart Association. [published correction appears in *Circulation.* 2020;141(2):e33]. *Circulation.* 2019;139:e56–e528. doi:10.1161/CIR.0000000000000659
7. Centers for Disease Control and Prevention. 2019 Mortality. Accessed June 2021. [https://www.cdc.gov/nchs/nvss/mortality\\_public-use\\_data.htm](https://www.cdc.gov/nchs/nvss/mortality_public-use_data.htm)
8. Setoguchi S, Stevenson LW, Schneeweiss S. Repeated hospitalizations predict mortality in the community population with heart failure. *Am Heart J.* 2007;154(2):260-266. doi:10.1016/j.ahj.2007.01.041
9. American Heart Association. Heart failure signs and symptoms. Updated May 31, 2017. Accessed June 2021. <https://www.heart.org/en/health-topics/heart-failure/warning-signs-of-heart-failure>
10. American Heart Association. Classes of heart failure. Updated May 31, 2017. Accessed June 2021. <https://www.heart.org/en/health-topics/heart-failure/what-is-heart-failure/classes-of-heart-failure>
11. Stewart GC, Kittleson MM, Patel PC, et al. INTERMACS (Interagency Registry for Mechanically Assisted Circulatory Support) profiling identifies ambulatory patients at high risk on medical therapy after hospitalizations for heart failure. *Circ Heart Fail.* 2016;9(11):e003032. doi:10.1161/CIRCHEARTFAILURE.116.003032
12. Ambardekar AV, Kittleson MM, Palardy M, et al. Outcomes with ambulatory advanced heart failure from the Medical Arm of Mechanically Assisted Circulatory Support (MedaMACS) Registry. *J Heart Lung Transplant.* 2019;38(4):408-417. doi:10.1016/j.healun.2018.09.021

These materials are not intended to replace your doctor's advice or information. For any questions or concerns you may have regarding the medical procedures, devices and/or your personal health, please discuss these with your physician.

## Abbott

6101 Stoneridge Dr., Pleasanton, CA 94588 USA, Tel: 1 925 847 8600  
[Abbott.com/HeartMate](http://Abbott.com/HeartMate)

## Rx Only

**Brief Summary:** Prior to using these devices, please review the Instructions for Use for a complete listing of indications, contraindications, warnings, precautions, potential adverse events and directions for use.

**HeartMate 3™ LVAS Indications:** The HeartMate 3™ Left Ventricular Assist System is indicated for providing short- and long-term mechanical circulatory support (e.g., as bridge to transplant or myocardial recovery, or destination therapy) in adult and pediatric patients with advanced refractory left ventricular heart failure and with an appropriate body surface area.

**HeartMate 3™ LVAS Contraindications:** The HeartMate 3 Left Ventricular Assist System is contraindicated for patients who cannot tolerate, or who are allergic to, anticoagulation therapy.

**HeartMate 3™ LVAS Adverse Events:** Adverse events that may be associated with the use of the HeartMate 3 Left Ventricular Assist System are: death, bleeding, cardiac arrhythmia, localized infection, right heart failure, respiratory failure, device malfunctions, driveline infection, renal dysfunction, sepsis, stroke, other neurological event (not stroke-related), hepatic dysfunction, psychiatric episode, venous thromboembolism, hypertension, arterial non-central nervous system (CNS) thromboembolism, pericardial fluid collection, pump pocket or pseudo pocket infection, myocardial infarction, wound dehiscence, hemolysis (not associated with suspected device thrombosis) or pump thrombosis.

™ Indicates a trademark of the Abbott group of companies.

‡ Indicates a third party trademark, which is property of its respective owner.

© 2023 Abbott. All Rights Reserved.

MAT-2100634 v3.0 | Item approved for U.S. use only.

